

CFX-L3500 IF

LASER MULTIFUNCTION SYSTEM

PARTS CATALOG

REVISION 0

[CFX-L3500IF

H12-1462

120V

USA]

Canon

OCT. 1998

HY8-39AJ-000

Application

This manual has been issued by Canon Inc. for qualified person to learn technical theory, installation, maintenance, and repair of products. This manual covers all localities where the products are sold. For this reason, there may be information in this manual that does not apply to your locality.

Corrections

This manual could include technical inaccuracies or typographical errors due to improvements or changes in the products. When changes occur in applicable products or in the content of this manual, Canon will release technical information as the need arises. In the event of major changes in the contents of this manual over a long or short period, Canon will issue a new editions of this manual.

The following paragraph does not apply to any countries where such provisions are inconsistent with local law.

Trademarks

The product names and company names described in this manual are the registered trademarks of the individual companies.

Copyright

This manual is copyrighted with all rights reserved. Under the copyright laws, this manual may not be copied, reproduced or translated into another language, in whole or in part, without the written consent of Canon Inc.

Copyright © 1998 by Canon Inc.

Office Imaging Consumer Products Quality Assurance Dept. 1
CANON INC.

5-1 Hakusan 7-Chome, Toride-city, Ibaraki 302-8501, Japan

DTP Systems

This manual was produced on Apple® Macintosh® personal computer and Canon SUPER LASER SHOT B406 PS laser beam printer.

Parts layout illustrations were created using Macromedia® FreeHand® 5.5J.

Documents and page layouts were created using Adobe® PageMaker® 6.0J.

Parts lists were created using © ACI 4th Dimension® and converted to PICT format by Solutions, Inc.® Super GLUE II®.

I. CONTENTS

1. ILLUSTRATION INDEX
2. PARTS LAYOUT & PARTS LIST
3. TOOL
4. LUBRICATIONS
5. GUIDE TO REPLACEMENT
6. NUMERICAL INDEX

II. ABOUT THIS MANUAL

1. ILLUSTRATION INDEX

For illustration index, the parts layout illustrations in this parts catalog are listed in abbreviated form in order of illustration number to identify the pages they appear on. To find an illustration of a part, see the ILLUSTRATION INDEX.

2. PARTS LAYOUT & PARTS LIST

Parts layout illustration

a) Parts search

Find a part from the parts layout illustration and find its key number from the parts list to identify the part number and name. Further, screws, nuts, washers, grip rings, pins and spacers are mentioned in the parts list.

Note: If parts have the same or similar shape but different specifications, their key number is assigned to several part numbers and names in the parts list.

b) Parts replacement procedure

The parts layout illustrations are arranged according to the disassembly procedure of the product.

When a unit in the illustration can be disassemble further, a reference illustration page of the disassembly will be included.

Parts where grease is to be applied are displayed as "Lubrication". When replacing parts, or if grease has accidentally been wiped off, refer to "4". (Lubrications), and reapply the grease.

The parts require carefully work are marked "See page 5-x". So refer to the corresponded page "5". (GUIDE TO REPLACEMENT).

The letters (A), (B) etc.) in the illustration indicate the connection locations of cables and screws.

Parts list

a) FIGURE & KEY No.

The FIGURE & KEY No. column corresponds to the key numbers assigned to the parts in the parts layout illustration.

It also corresponds to the part locations printed on the PC board.

b) PART NUMBER

The PART NUMBER column gives the part numbers corresponding to the key numbers. To order a part, indicate the part number clearly.

Note: Parts marked NPN are not service parts.

c) RANK

The service parts with N in the RANK column are order parts.

d) QTY

The QTY column gives the number of parts in the corresponding components layout illustration.

e) DESCRIPTION

The DESCRIPTION column gives the part names in English. To order a part, indicate the part name, too.

3. TOOL

This is a list of tools used for servicing products.

4. LUBRICATIONS

Where grease is to be applied in order to allow moving parts to work smoothly, and to increase conductivity, the type and amount of grease to be used will be mentioned.

5. GUIDE TO REPLACEMENT

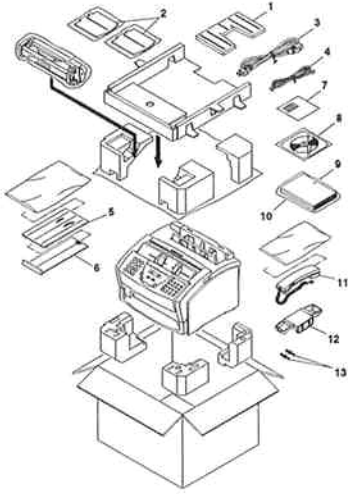
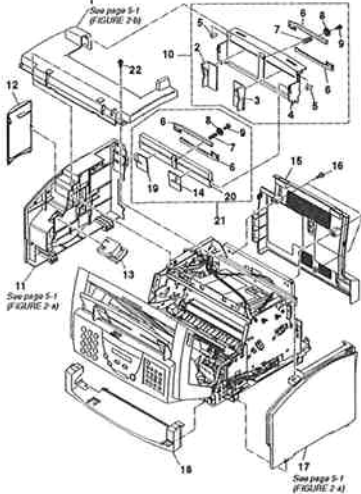
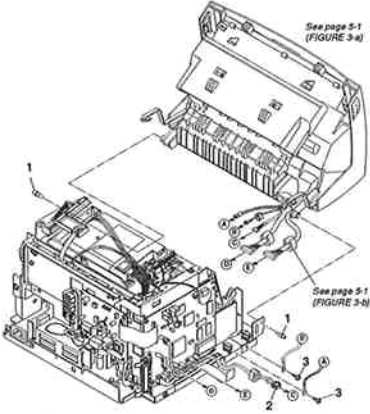
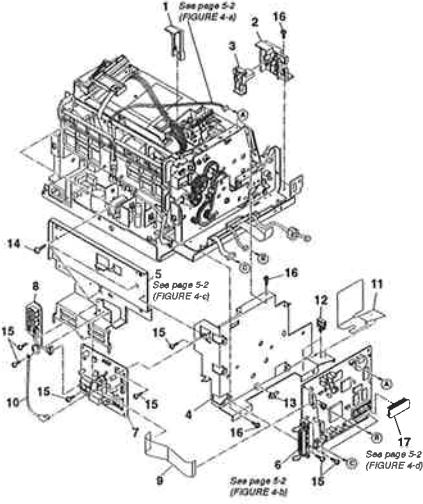
Explains the special cares and cautions for the parts replacement.

6. NUMERICAL INDEX

All the parts listed in this parts catalog are arranged in order of part number. You can identify part locations and names from the NUMERICAL INDEX.

This page intentionally left blank

1. ILLUSTRATION INDEX


<p>FIGURE 1 CFX-L3500IF PACKAGE CONTENTS</p>	<p>See Page 2-1</p>	<p>FIGURE 2 COVERS & TRAY ASS'Y</p>	<p>See Page 2-3</p>
			
<p>FIGURE 3 READING ASS'Y & MAIN FRAME</p>	<p>See Page 2-5</p>	<p>FIGURE 4 CIRCUIT BOARDS & MAIN FRAME</p>	<p>See Page 2-7</p>
			

<p>FIGURE 5 CIRCUIT BOARDS & BOTTOM PLATE</p>	<p>See Page 2-9</p>	<p>FIGURE 6 READING ASS'Y 1</p>	<p>See Page 2-11</p>
<p>FIGURE 7 READING ASS'Y 2</p>	<p>See Page 2-13</p>	<p>FIGURE 8 OPERATION PANEL ASS'Y & ADF UPPER</p>	<p>See Page 2-15</p>

<p>FIGURE 9 ADF LOWER</p>	<p>See Page 2-17</p>	<p>FIGURE 10 SCANNER ASS'Y</p>	<p>See Page 2-19</p>
<p>FIGURE 11 FIXING SECTION 1</p>	<p>See Page 2-21</p>	<p>FIGURE 12 DRIVE GEARS</p>	<p>See Page 2-23</p>

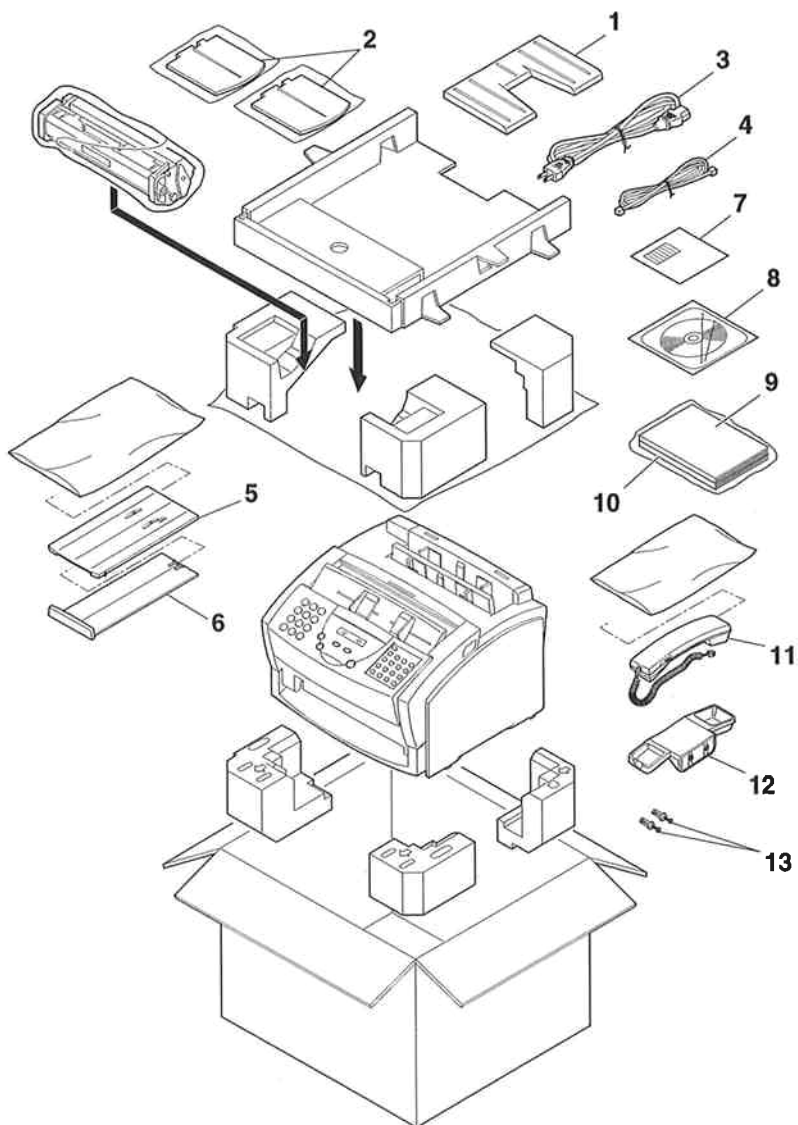
<p>FIGURE 13 FIXING SECTION 2</p>	<p>See Page 2-25</p>	<p>FIGURE 14 PAPER FEED SECTION</p>	<p>See Page 2-27</p>
<p>FIGURE 15 PICK-UP ROLLER ASS'Y</p>	<p>See Page 2-29</p>	<p>FIGURE 16 SEPARATION GUIDE ASS'Y (READING)</p>	<p>See Page 2-31</p>

<p>FIGURE 17 FEEDER ASS'Y</p>	<p>See Page 2-33</p>	<p>FIGURE 18 DELIEVRY ASS'Y</p>	<p>See Page 2-35</p>
<p>FIGURE 19 TRANSFER BLOCK ASS'Y</p>	<p>See Page 2-37</p>	<p>FIGURE 20 SEPARATION GUIDE ASS'Y (RECORDING)</p>	<p>See Page 2-39</p>

FIGURE 21 TOOLS	See Page 3-1		
 <p>T1</p> <p>T2</p> <p>T3</p>			

2. PARTS LAYOUT & PARTS LIST

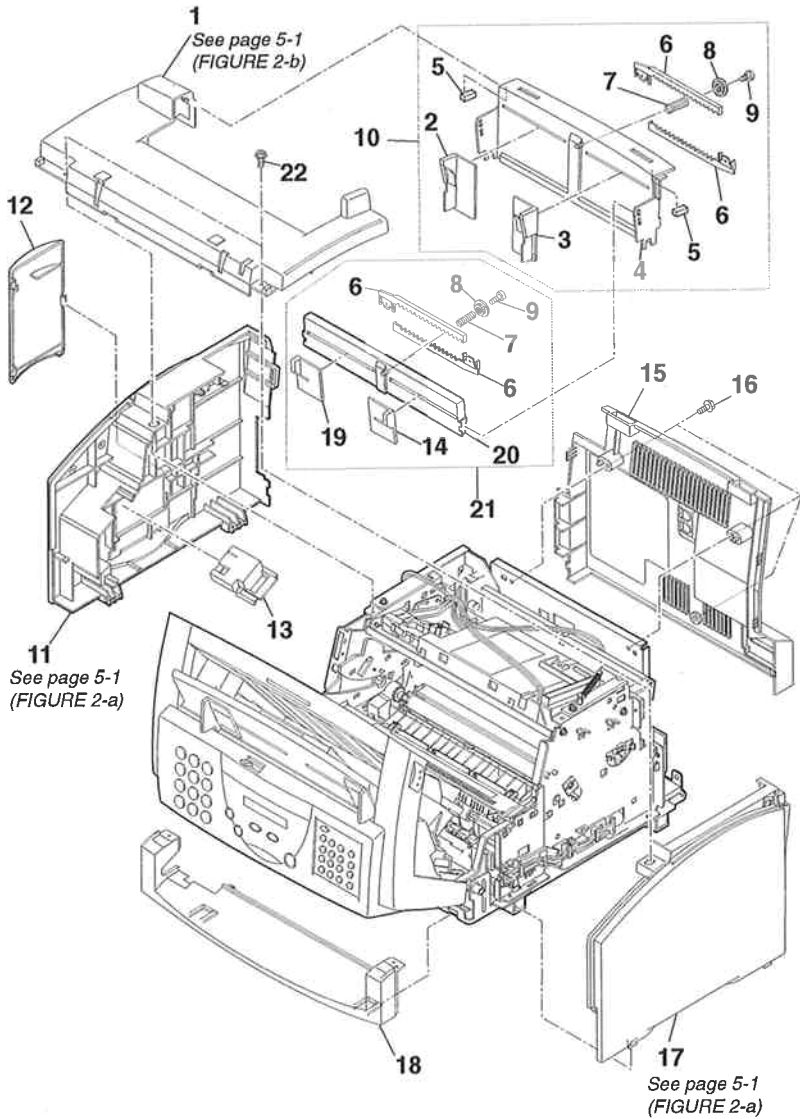
FIGURE 1 CFX-L3500IF PACKAGE CONTENTS



CFX-L3500IF 2.PARTS LAYOUT & PARTS LIST

FIGURE & KEY No.	PART No.	RANK	QTY	DESCRIPTION	REMARKS
1 - 1	HB1-2989-000		1	TRAY, PAPER REST	
2	HB1-2988-050		2	TRAY, SUPPORT	
3	WT3-5068-000		1	CORD, POWER SUPPLY, 120V	
4	HH2-2824-000		1	MODULAR CORD, 2P	
5	HB1-2987-000		1	TRAY, PAPER OUTPUT	
6	HB1-1230-000		1	PAPER OUT PUT EXTENSION	
7	HB1-3210-000		1	LABEL, CAUTION	
8	HH4-3199-000	N	1	CD-ROM, DRIVER SOFTWARE	
9	HT1-2120-000	N	1	USER'S GUIDE, CFX-L3500IF	
10	HT1-2123-000	N	1	USER'S GUIDE DESKTOP MANAGER	
11	HH7-2104-000		1	HANDSET ASS'Y (USA, AG)	
12	HB1-1264-000		1	HOLDER, HANDSET CRADLE	
13	WT2-5465-000		2	RIVET	

FIGURE 2 COVERS & TRAY ASS'Y



CFX-L3500IF 2.PARTS LAYOUT & PARTS LIST

FIGURE & KEY No.	PART No.	RANK	QTY	DESCRIPTION	REMARKS
2 - 1	HB1-2980-000		1	COVER, UPPER	
2	HB1-3003-000		1	GUIDE, AUTO PAPER FEED, LEFT	
3	HB1-3004-000		1	GUIDE, AUTO PAPER FEED, RIGHT	
4	HB1-3002-000		1	TRAY, AUTO PAPER FEED	
5	HB1-3211-000		1	SHEET, TRAY	
6	HB1-3008-000		4	RACK	
7	HS5-2141-020		2	SPRING, SLIDER	
8	HS5-0254-000		2	GEAR, Z16	
9	XA9-0476-000		2	SCREW, TP M3X8	
10	HG5-1292-020		1	AUTO PAPER FEED ASS'Y	
11	HB1-3107-030		1	COVER, LEFT	
12	HB1-2992-000		1	COVER, ROM	
13	HB1-3049-000		1	SUPPORT, STOPPER	
14	HB1-3007-000		1	GUIDE,MANUAL PAPER FEED,RIGHT	
15	HB1-2983-040		1	COVER, REAR	
16	XB6-7300-807		3	SCREW, TP, M3X8	
17	HB1-2982-040		1	COVER, RIGHT	
18	HB1-2984-030		1	COVER, FRONT	
19	HB1-3006-000		1	GUIDE,MANUAL PAPER FEED,LEFT	
20	HB1-3005-000		1	PLATE, MANUAL PAPER FEED	
21	HG5-1293-020		1	MANUAL PAPER FEED ASS'Y	
22	XA9-0879-000		2	SCREW, RS M3X10	

FIGURE 3 READING ASS'Y & MAIN FRAME

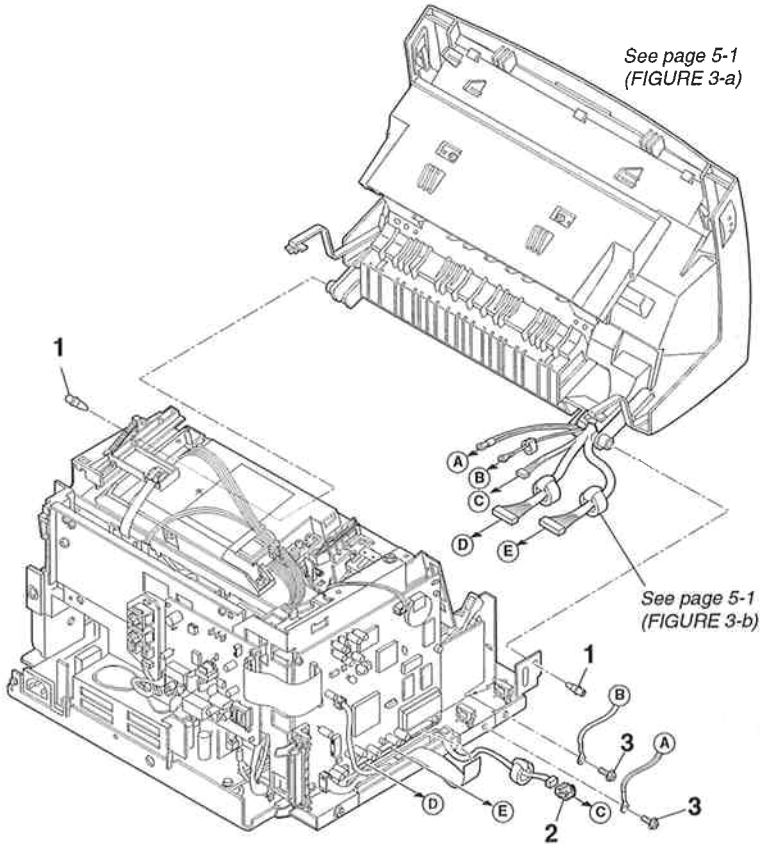


FIGURE 4 CIRCUIT BOARDS & MAIN FRAME

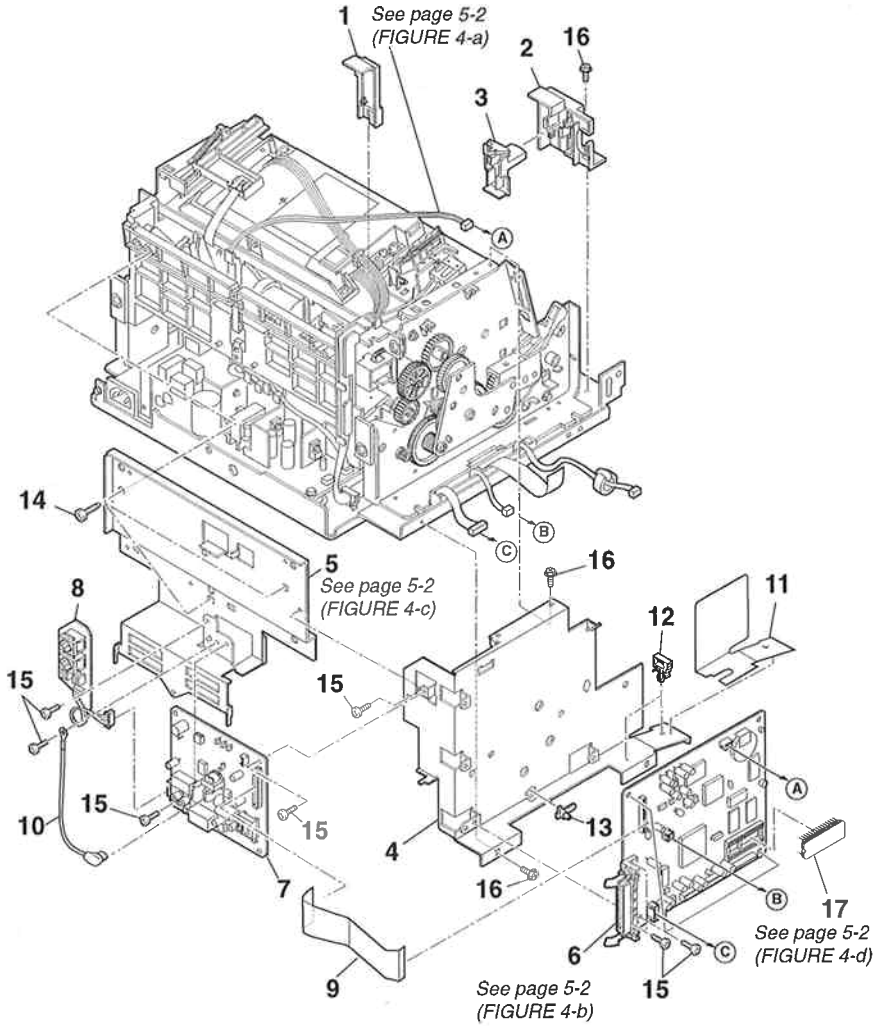


FIGURE & KEY No.	PART No.	RANK	QTY	DESCRIPTION	REMARKS
4 - 1	HB1-3043-000		1	COVER, FIXING SECTION, RIGHT	
2	HB1-3042-000		1	COVER, FIXING SECTION, LEFT	
3	HB1-2985-000		1	LEVER, SWITCHING	
4	HB1-3027-030	N	1	HOLDER, SCNT BOARD	
5	HB1-2990-000	N	1	HOLDER, NCU BOARD	
6	HG5-1643-000		1	SCNT BOARD ASS'Y	
7	HG1-4268-040		1	NCU BOARD ASS'Y	
8	HG5-1306-000		1	MODULAR BOARD ASS'Y	
9	HH2-2757-000		1	FLAT CABLE	
10	HH2-2767-000		1	WIRE, GROUNDING	
11	HB1-3028-000		1	SHEET, CORE GARD	
12	WT2-0317-000		2	CLIP, CABLE	
13	HB1-3022-000		1	SPACER	
14	XB4-7401-007		3	SCREW, PAN HEAD SELF-TAPPING	
15	XB1-2300-807		10	SCREW, CROSS-RECESS, FCH	
16	XA9-0724-000		3	SCREW, M3X8	
17	HH4-3197-000		1	IC, LH538N33, MASK-ROM	

FIGURE 5 CIRCUIT BOARDS & BOTTOM PLATE

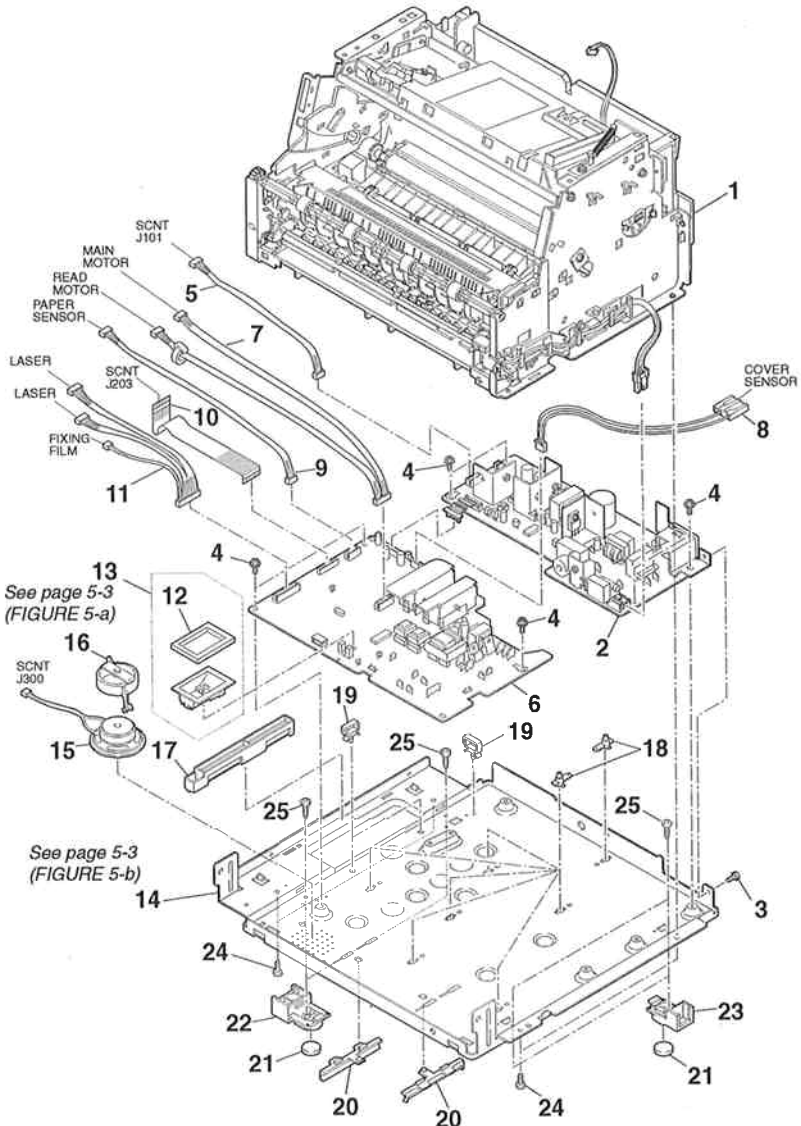


FIGURE & KEY No.	PART No.	RANK	QTY	DESCRIPTION	REMARKS
5- 1	NPN		1	FRAME UNIT	
2	HH3-5313-000		1	POWER SUPPLY UNIT	
3	XB2-7300-607		1	SCREW, M3X6	
4	XA9-0863-000		7	SCREW, TAP M3X6	
5	HH2-2762-000		1	CABLE ASSEMBLY	
6	HG5-1304-000		1	PCNT BOARD ASS'Y	
7	HH2-2761-000		1	CABLE ASSEMBLY	
8	HH2-2768-000		1	CABLE WITH CONNECTOR, 2P	
9	HH2-2760-000		1	CABLE WITH CONNECTOR, 6P	
10	HH2-2758-000		1	FLAT CABLE	
11	HH2-2759-000		1	CABLE ASSEMBLY	
12	RB1-7270-000		1	CUSHION	
13	RF5-2382-000		1	COVER, WATERPROOF	
14	HB1-3020-030	N	1	PLATE, BOTTOM	
15	HH7-2287-000		1	SPEAKER UNIT	
16	HB1-3023-000		1	HOLDER, SPEAKER	
17	HB1-3021-000		1	GUIDE, CABLE	
18	HB1-3022-000		7	SPACER	
19	WT2-0317-000		3	CLIP, CABLE	
20	HB1-3026-050		2	RAIL, OUTPUT TRAY	
21	HB1-3212-000		1	FOOT, RUBBER	
22	HB1-3024-040		2	FOOT, LEFT	
23	HB1-3025-040		2	FOOT, RIGHT	
24	XA9-0724-000		4	SCREW, M3X8	
25	XB4-7300-607		4	SCREW, TAP TIGHT, BINDING HEAD	

FIGURE 6 READING ASS'Y 1

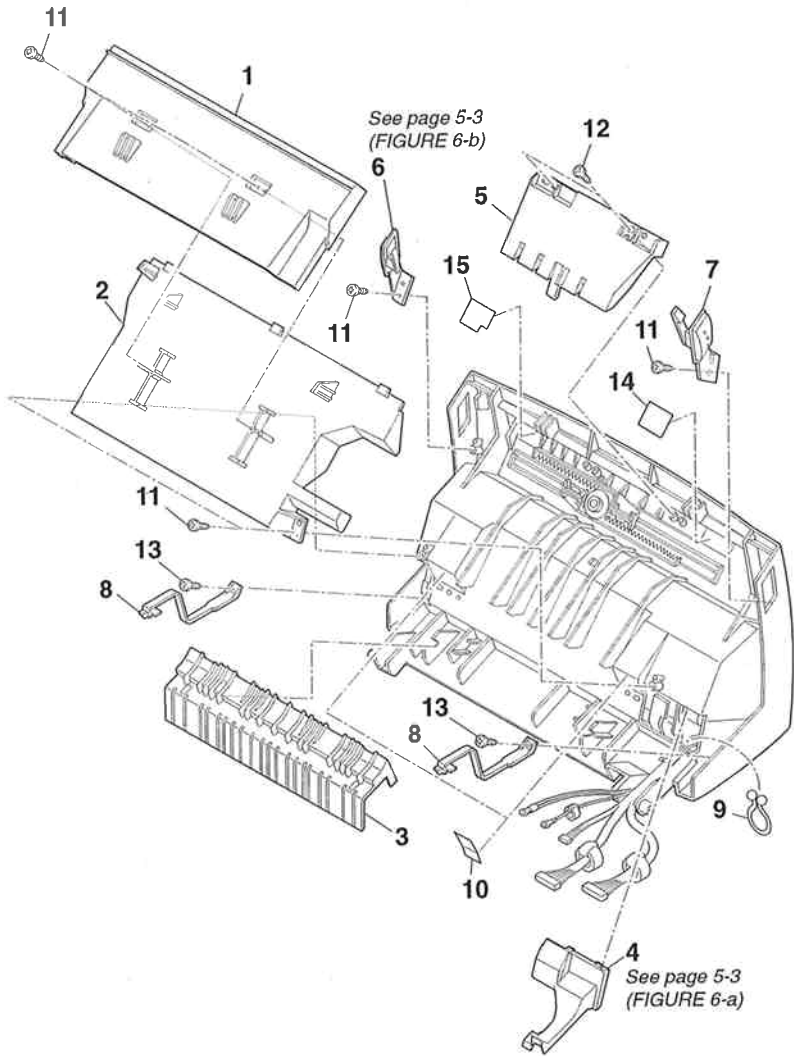
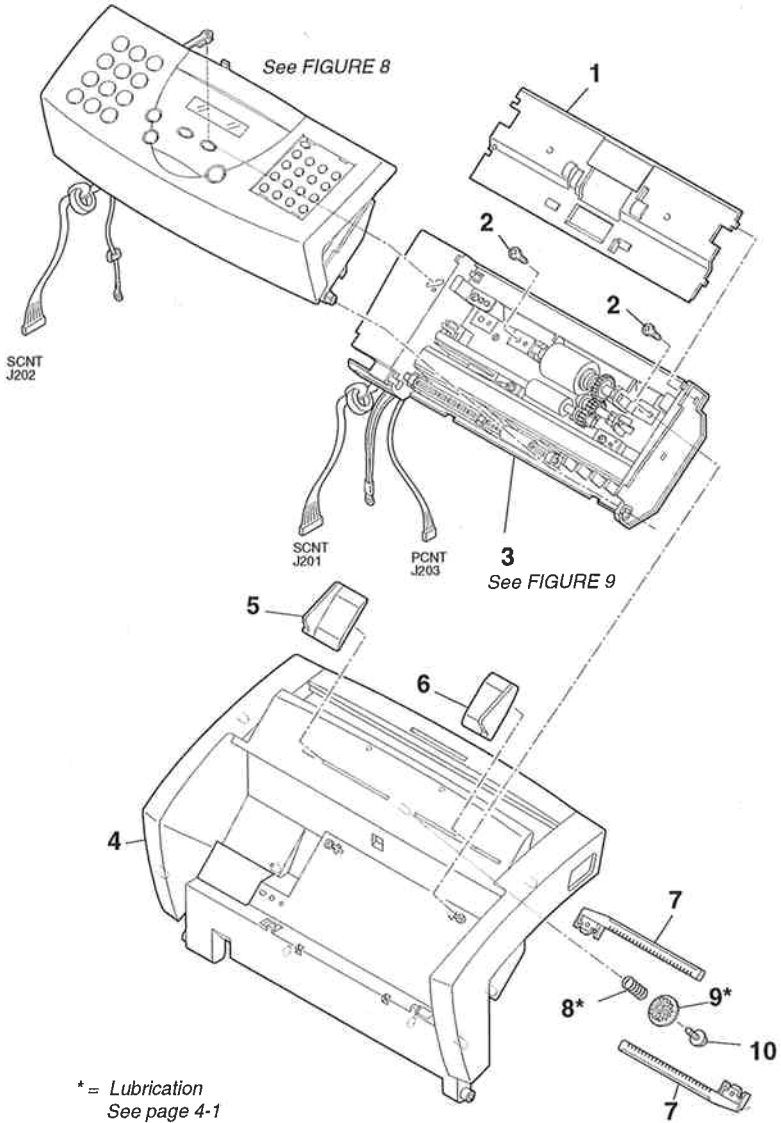


FIGURE & KEY No.	PART No.	RANK	QTY	DESCRIPTION	REMARKS
6 - 1	HB1-3001-000		1	AIR DUCT	
2	HB1-2996-000		1	AIR DUCT	
3	HB1-2997-000		1	GUIDE, FACE DOWN	
4	HB1-3105-000		1	COVER, CABLE	
5	HB1-3010-030		1	SUPPORT, TRAY	
6	HB1-3009-050		1	RELEASE BUTTON, RIGHT	
7	HB1-3000-050		1	RELEASE BUTTON, LEFT	
8	HB1-3109-020		2	STOPPER, CRG	
9	WT2-5569-000		1	CLIP, CABLE	
10	HB1-1870-000		1	SHEET	
11	XB4-7301-007		6	SCREW, TAP TIGHT BH3X10	
12	XB4-7300-809		2	SCREW, TAP, BINDING HEAD, M3X8	
13	XB4-7301-409		2	SCREW, TAPPING M3X14	
14	HB1-3044-000		1	SHEET, PAPER EJECT (L)	
15	HB1-3045-000		1	SHEET, PAPER EJECT (R)	

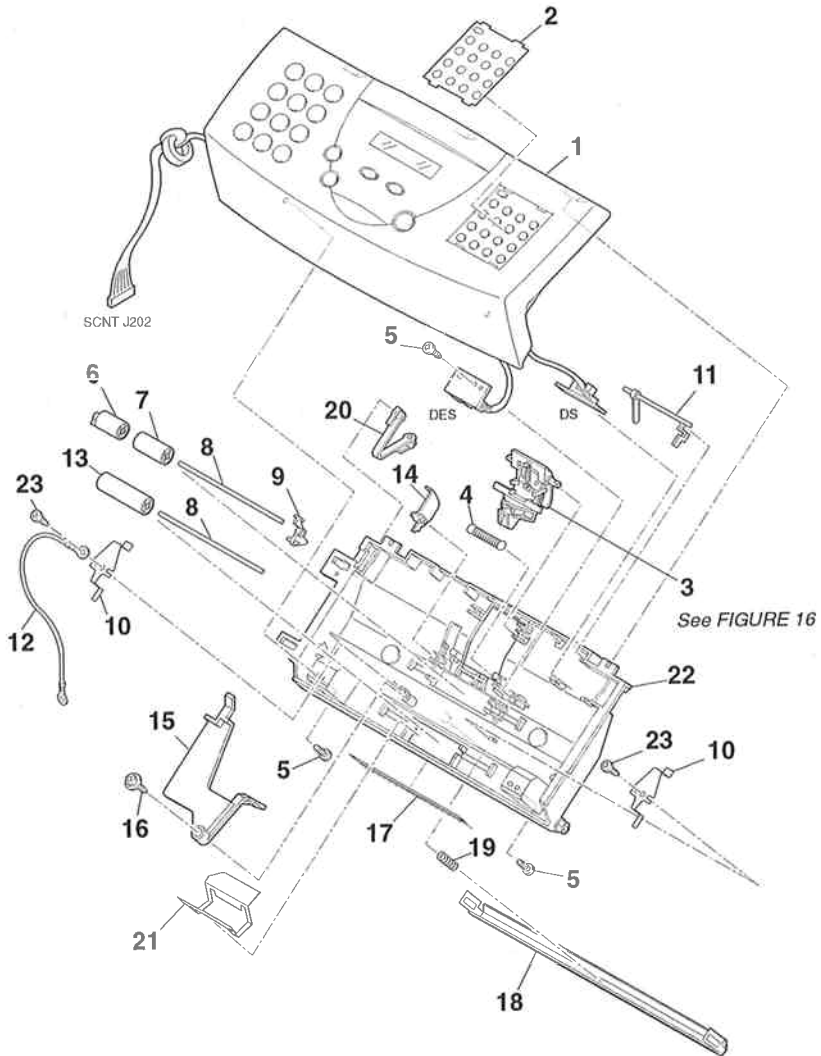
FIGURE 7 READING ASS'Y 2



CFX-L3500IF 2.PARTS LAYOUT & PARTS LIST

FIGURE & KEY No.	PART No.	R A N K	Q T Y	DESCRIPTION	REMARKS
7 - 1	HB1-3032-000		1	COVER, DOCUMENT GUIDE, LOWER	
2	XB4-7301-007		2	SCREW, TAP TIGHT BH3X10	
3	NPN		1	ADF UNIT	
4	HB1-2995-080		1	COVER, CARTRIDGE	
5	HB1-2998-030		1	GUIDE, DOCUMENT FEED, LEFT	
6	HB1-2999-030		1	GUIDE, DOCUMENT FEED, RIGHT	
7	HB1-2883-000		2	SLIDER, RACK	
8	HS5-2130-000		1	SPRING, SLIDER	
9	HS5-0238-000		1	GEAR, Z16	
10	XA9-0476-000		10	SCREW, TP M3X8	

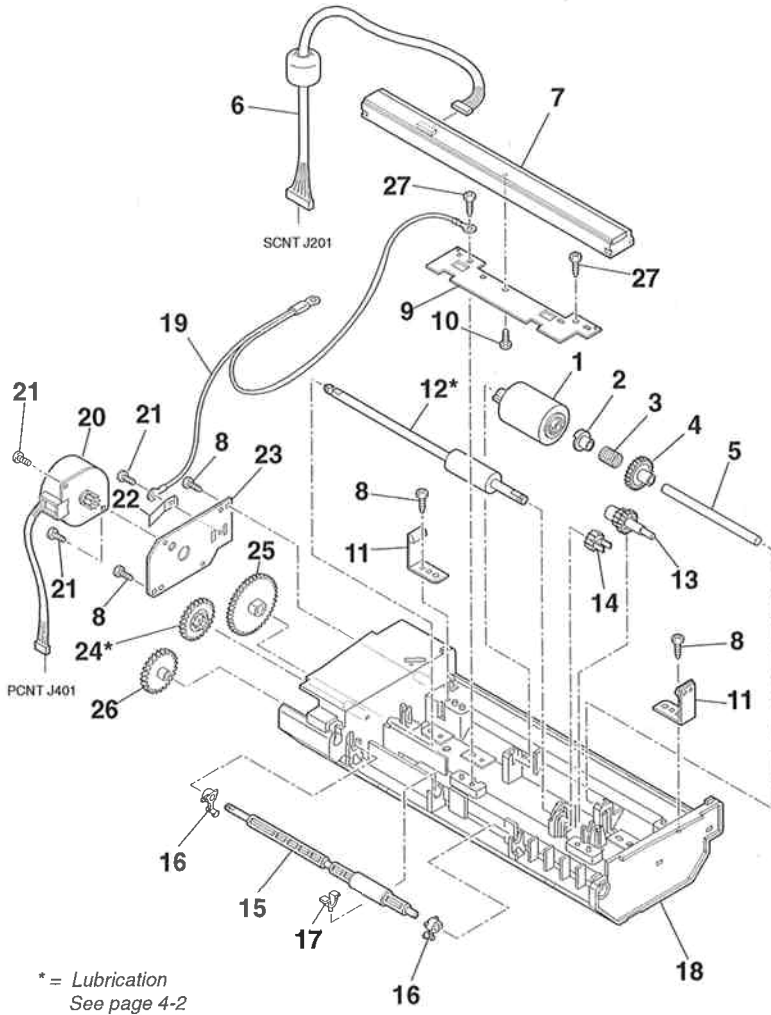
FIGURE 8 OPERATION PANEL ASS'Y & ADF UPPER



CFX-L3500IF 2.PARTS LAYOUT & PARTS LIST

FIGURE & KEY No.	PART No.	R A N K	Q T Y	DESCRIPTION	REMARKS
8 - 1	HH7-2357-000		1	OPERATION PANEL ASS'Y	
2	HB1-3427-000		1	SHEET, ONE-TOUCH DIAL	
3	HG5-1308-000		1	SEPARATION GUIDE ASS'Y	
4	HS5-2078-000		1	SPRING	
5	XB4-7301-007		3	SCREW, TAP TIGHT BH3X10	
6	HB1-2864-000		1	ROLLER, BACK UP	
7	HS5-6023-030		1	ROLLER, BACK UP	
8	HB1-2865-000		2	SHAFT, BACK UP ROLLER	
9	HB1-2861-000		1	ARM, DETECTION (DES)	
10	HB1-2866-000		1	PLATE, PRESSURE	
11	HB1-2862-000		1	ARM, DETECTION (DS)	
12	HH2-2766-000		1	WIRE, GROUNDING	
13	HS5-6042-000		1	ROLLER, DELIVERY, 2	
14	HB1-2863-000		1	STOPPER, DOCUMENT	
15	HB1-3041-000		1	LEVER, DOCUMENT RELEASE	
16	XA9-0476-000		1	SCREW, TP M3X8	
17	HB1-1784-000		1	BRUSH, STATIC DISCHARGE	
18	HF5-0362-030		1	WHITE SHEET UNIT	
19	HS5-2129-000		1	SPRING, WHITE SHEET	
20	HB1-3257-000		1	STOPPER, OPERATION PANEL	
21	HB1-2875-000		1	SHEET, DOCUMENT STOP	
22	HB1-2860-030		1	COVER, ADF, UPPER	
23	XB4-7300-807		2	SCREW, TAP TIGHT, BINDING HEAD	

FIGURE 9 ADF LOWER



CFX-L3500IF 2.PARTS LAYOUT & PARTS LIST

FIGURE & KEY No.	PART No.	RANK	QTY	DESCRIPTION	REMARKS
9 - 1	HB1-3034-000		1	ROLLER, SEPARATION	
2	HB1-1779-000		1	SPACER	
3	HS5-2077-000		1	SPRING, CLUTCH	
4	HS5-0152-020		1	GEAR, Z40B	
5	HB1-2881-000		1	SHAFT, SEPARATION ROLLER	
6	HH2-2763-000		1	CABLE WITH CONNECTOR, 10P	
7	HH7-2285-000		1	CONTACT SENSOR UNIT	
8	XB4-7300-807		4	SCREW, TAP TIGHT, BINDING HEAD	
9	HB1-3037-000	N	1	PLATE, CONTACT SENSOR	
10	XB4-7260-807		1	SCREW, TAP TIGHT, BINDING HEAD	
11	HF5-0375-000		2	LOCK, OPERATION PANEL	
12	HB1-3033-000		1	ROLLER, DOCUMENT FEED	
13	HS5-0253-030		1	GEAR, Z21/28B	
14	HS5-0155-000		1	GEAR, Z21D	
15	HF5-0328-000		1	ROLLER, DOCUMENT EJECT	
16	HS5-1070-030		2	BUSHING	
17	HS5-1069-030		1	BUSHING	
18	HB1-3031-000		1	FRAME,ADF LOWER	
19	HH2-2765-000		1	WIRE, GROUNDING	
20	HH7-2290-000		1	MOTOR, DOCUMENT FEED	
21	XB1-2300-407		3	SCREW, BH3X4 (S)	
22	HB1-3036-000		1	PLATE, GROUNDING	
23	HB1-3038-000	N	1	PLATE, DOCUMENT FEED MOTOR	
24	HS5-0252-030		1	GEAR, Z21/Z54	
25	HS5-0250-030		1	GEAR, Z82D	
26	HS5-0251-030		1	GEAR, Z59D	
27	XB4-7301-007		2	SCREW, TAP TIGHT BH3X10	

FIGURE 10 SCANNER ASS'Y

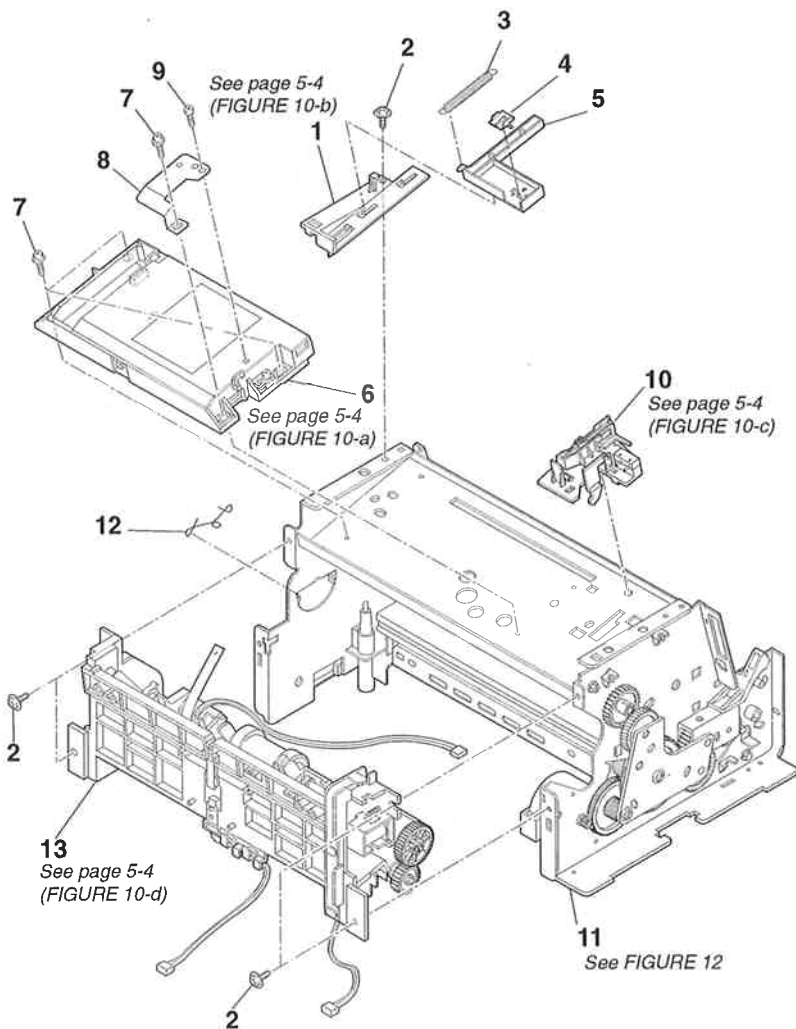
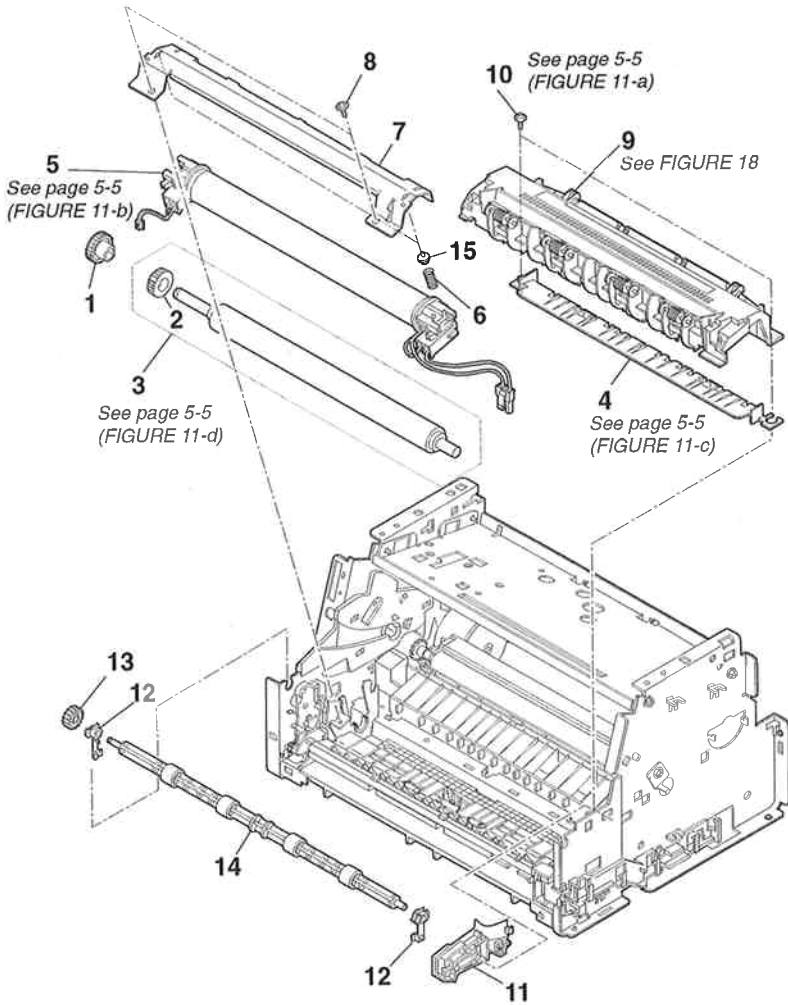


FIGURE 11 FIXING SECTION 1



CFX-L3500IF 2.PARTS LAYOUT & PARTS LIST

FIGURE & KEY No.	PART No.	RANK	QTY	DESCRIPTION	REMARKS
11- 1	RS5-0796-000		1	GEAR, 27T	
2	RB2-1668-000		1	RUBBER, CONTINUITY	
3	RF5-2364-000		1	ROLLER, PRESSURE	
4	RB1-7247-000		1	GUIDE, PAPER	
5	RG5-3459-040		1	FIXING ASS'Y	
6	RS5-2508-000		2	SPRING, COMPRESSION	
7	RB1-7258-000	N	1	PLATE, PRESSURE	
8	XB6-7300-807		2	SCREW, TP, M3X8	
9	RG5-3474-020		1	DELIVERY ASS'Y	
10	XA9-0724-000		2	SCREW, M3X8	
11	RB1-7341-020		1	GUIDE, SUB, CARTRIDGE, RIGHT	
12	RB1-7288-020		2	BUSHING	
13	RS5-0797-000		1	GEAR, 18T	
14	RF5-2367-000		1	ROLLER, FEEDER	
15	RB1-7257-000		2	BUSHING, SPRING	

FIGURE 12 DRIVE GEARS

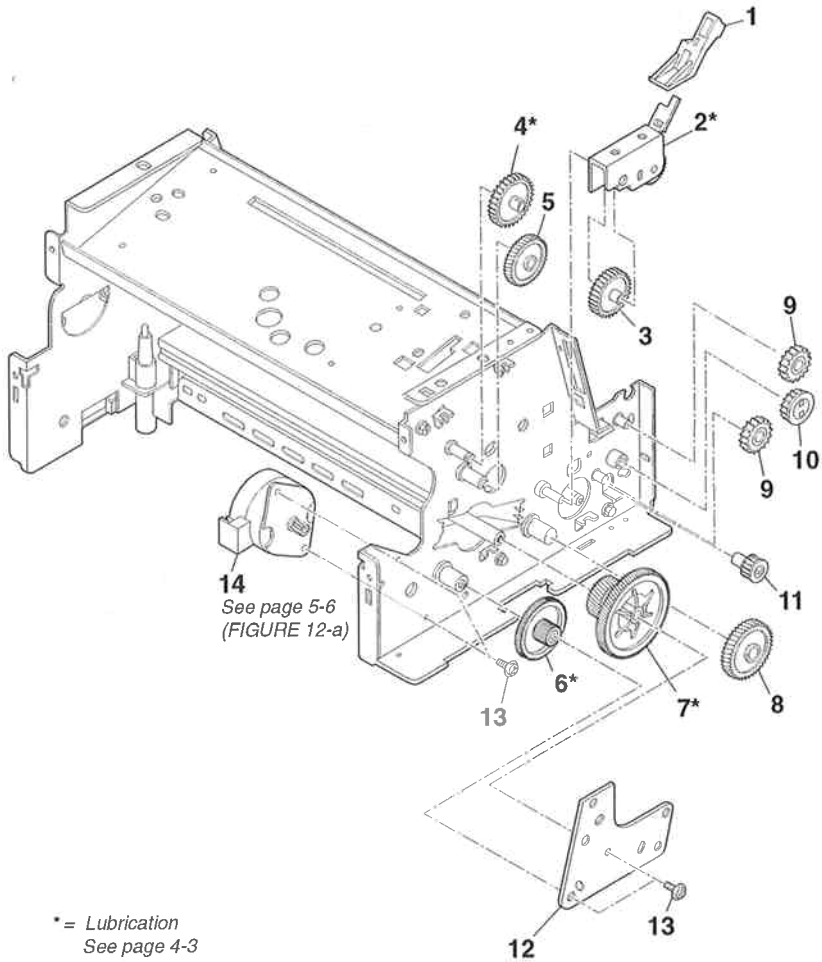


FIGURE & KEY No.	PART No.	RANK	QTY	DESCRIPTION	REMARKS
12- 1	RB1-8170-000		1	LEVER, RELEASE, D	
2	RF5-1513-000		1	ARM, SWING	
3	RS5-0791-000		1	GEAR, 36T	
4	RS5-0789-000		1	GEAR, 37T	
5	RS5-0799-000		1	GEAR, 51T/17T	
6	RS6-0380-000		1	GEAR, 23T/98T	
7	RS5-0788-000		1	GEAR, 32T/93T	
8	RS5-0790-000		1	GEAR, 54T/19T	
9	RS5-0793-000		2	GEAR, 22T	
10	RS5-0794-000		1	GEAR, 24T	
11	RS5-0798-000		1	GEAR, 15T	
12	RB2-1632-000	N	1	PLATE, GEAR SUPPORT	
13	XA9-0267-000		4	SCREW, TP, M3X6	
14	RH7-1320-000		1	MOTOR, DC 12V 24W	

FIGURE 13 FIXING SECTION 2

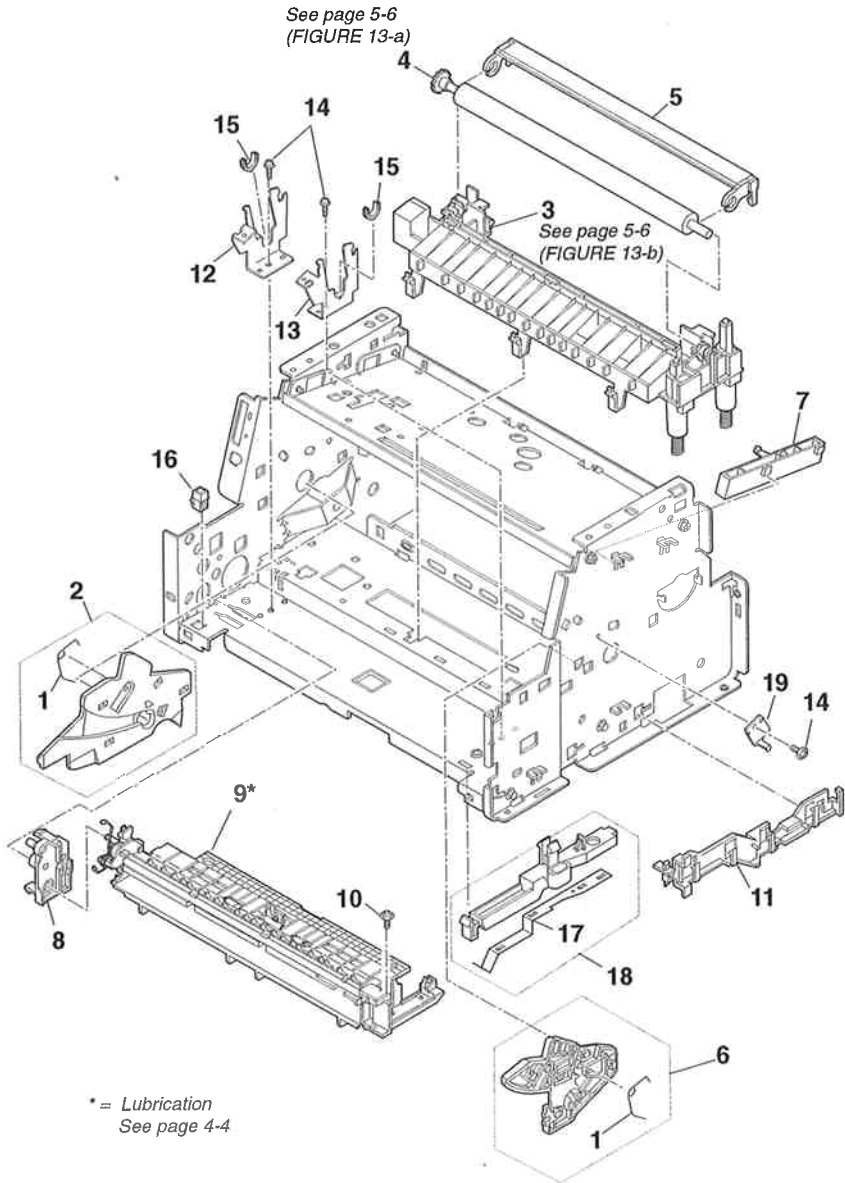
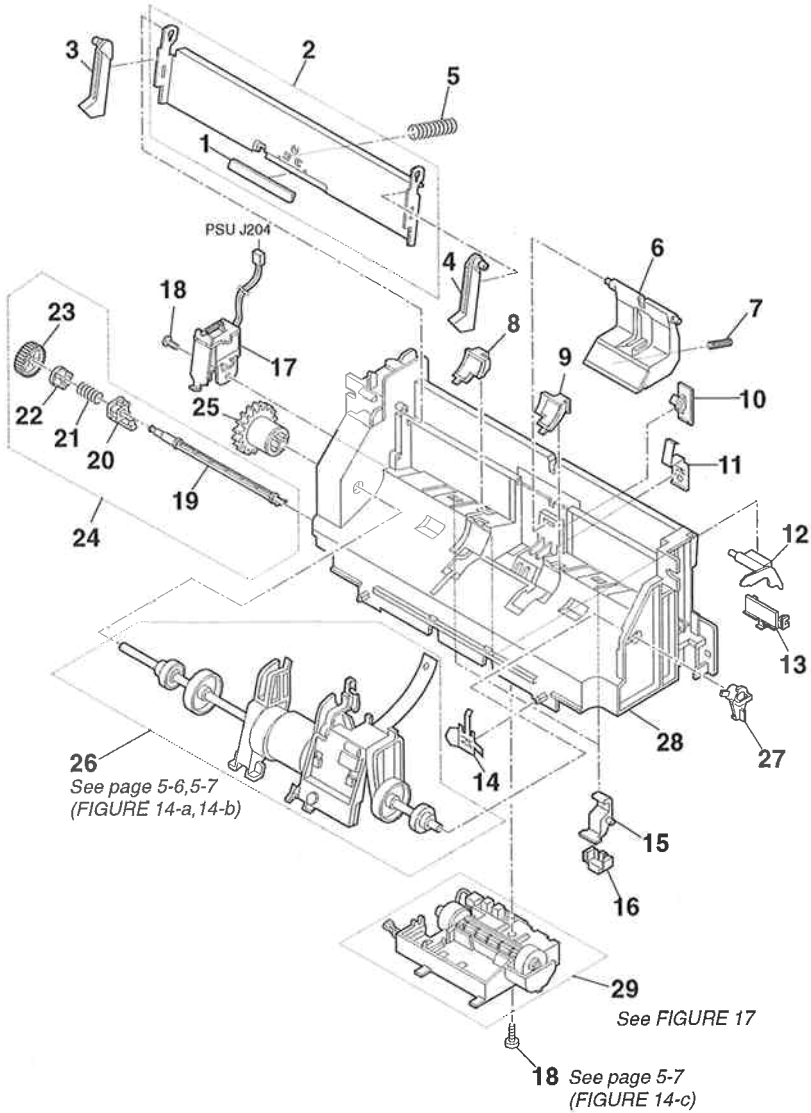


FIGURE & KEY No.	PART No.	RANK	QTY	DESCRIPTION	REMARKS
13- 1	RS5-2506-000		1	SPRING, TORSION	
2	RF5-1514-020		1	GUIDE, CARTRIDGE,LEFT	
3	RG5-3452-000		1	TRANSFER BLOCK ASS'Y	
4	RF5-1534-000		1	ROLLER, TRANSFER	
5	RF5-2358-000		1	GUIDE, TRANSFER	
6	RF5-1515-020		1	GUIDE, CARTRIDGE	
7	HB1-3019-000		1	STOPPER, CARTRIDGE	
8	RB1-7107-000		1	HOLDER, GEAR	
9	RG5-3475-040		1	SEPARATION GUIDE ASS'Y	
10	XA9-0724-000		1	SCREW, M3X8	
11	RB1-7130-020		1	GUIDE, CABLE	
12	RB1-7255-000	N	1	SIDE PLATE, LEFT	
13	RB1-7256-000	N	1	SIDE PLATE, RIGHT	
14	XA9-0686-000		3	SCREW, M3x6	
15	RB1-7246-000		2	BUSHING	
16	VS1-5057-002		1	CONNECTOR, 2P	
17	RB1-7238-000		1	SPRING, LEAF	
18	RF5-1533-000		1	PLATE, COMMUNITY	
19	RB1-7129-000		1	SPRING, GROUNDING	

FIGURE 14 PAPER FEED SECTION



CFX-L3500IF 2.PARTS LAYOUT & PARTS LIST

FIGURE & KEY No.	PART No.	RANK	QTY	DESCRIPTION	REMARKS
14- 1	RB2-1706-000		1	SHEET, SEPARATION	
2	RF5-2372-000		1	PLATE, MIDDLE	
3	RB1-7185-000		1	ARM, PLATE, LEFT	
4	RB1-7186-000		1	ARM, PLATE, RIGHT	
5	RS5-2501-000		1	SPRING, COMPRESSION	
6	RB1-7181-000		1	ARM, SEPARATION	
7	RS5-2502-000		1	SPRING, COMPRESSION	
8	RF5-1492-000		1	PAD, LEFT	
9	RF5-1493-000		1	PAD, RIGHT	
10	RB1-7206-000		1	HOLDER, ARM	
11	RB1-7199-000		1	SPRING, GROUNDING	
12	RB1-7182-000		1	LEVER, SENSOR	
13	RB1-7183-000		1	HOLDER, LEVER	
14	RB1-7172-000		1	SPRING, GROUNDING	
15	RB1-7219-000		2	STOPPER	
16	RB1-7220-000		2	HOLDER, STOPPER	
17	RH7-5139-030		1	SOLENOID	
18	XB4-7401-007		2	SCREW, PAN HEAD SELF-TAPPING	
19	RB1-7221-000		1	SHAFT, DRIVE	
20	RB1-7222-000		1	BUSHING	
21	RS5-2510-000		1	SPRING, COMPRESSION	
22	RB1-7224-000		1	RATCHET	
23	RS5-0786-000		1	GEAR, 24T	
24	RG5-1947-000		1	FEEDER DRIVE ASS'Y	
25	RB1-7197-020		1	CLUTCH	
26	HG5-1288-000		1	PICKUP ROLLER ASS'Y	
27	RB1-7184-000		1	BUSHING	
28	RB1-7177-000	N	1	FRAME, PAPER FEED	
29	RG5-3485-030		1	FEEDER ASS'Y	

FIGURE 15 PICK-UP ROLLER ASS'Y

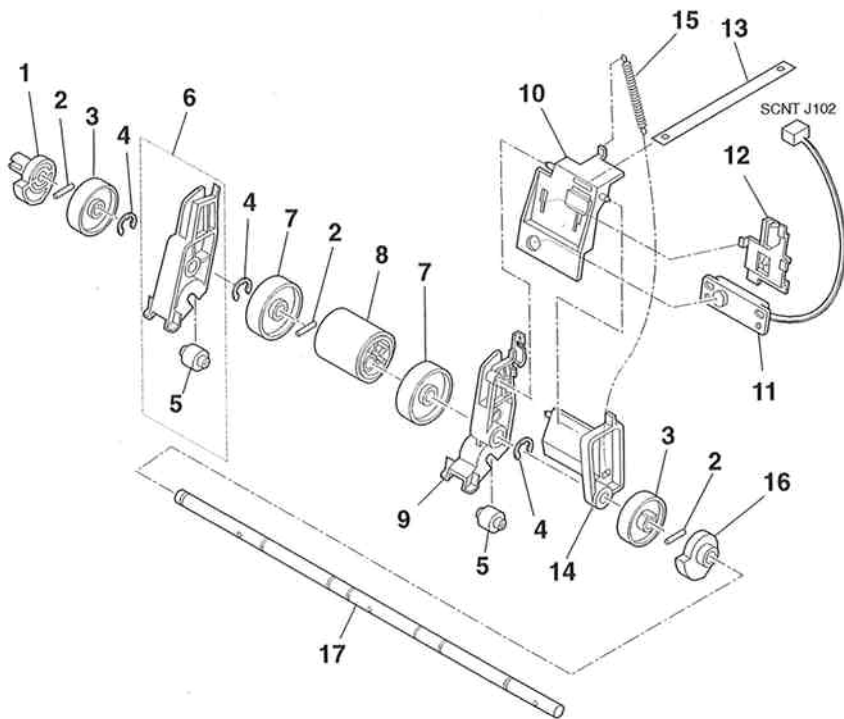


FIGURE & KEY No.	PART No.	RANK	QTY	DESCRIPTION	REMARKS
15 - 1	RB1-7193-000		1	CAM, LEFT	
2	XD9-0159-000		3	PIN, DOWEL	
3	RB2-1703-000		2	ROLLER, SUB	
4	XD9-0131-000		4	RING,E	
5	RB2-1701-000		2	ROLLER, FEED	
6	RG5-3492-000		1	FEED ROLLER ASS'Y, LEFT	
7	RB2-1633-000		2	ROLLER, SUB	
8	RB2-1634-000		1	ROLLER, PAPER PICK-UP	
9	HB1-3013-000		1	HOLDER, ROLLER	
10	HB1-3011-000		1	HOLDER, TONER SENSOR	
11	HH7-2291-000		1	TONER SENSOR ASS'Y	
12	HB1-3012-000		1	SUPPORTER, TONER SENSOR	
13	HB1-3015-000		1	BELT, TONER SENSOR	
14	HB1-3014-000		1	SUB HOLDER, ROLLER	
15	HS5-2139-000		1	SPRING, TONER SENSOR	
16	RB1-7194-000		1	CAM, RIGHT	
17	RB2-1707-000	N	1	SHAFT, PAPER PICK-UP	

FIGURE 16 SEPARATION GUIDE ASS'Y (READING)

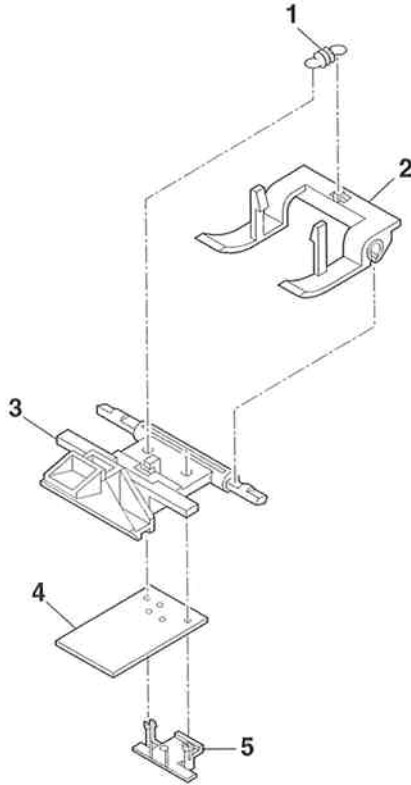


FIGURE 17 FEEDER ASS'Y

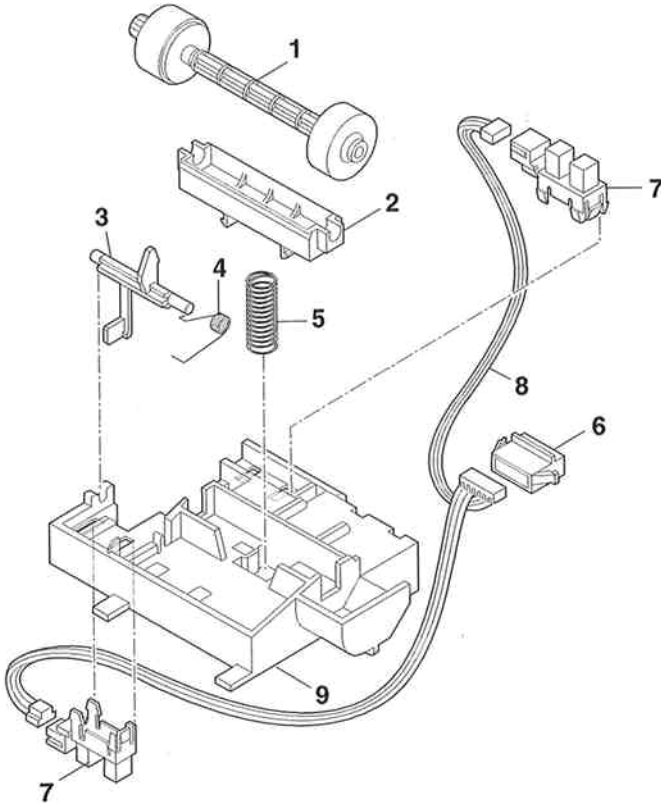


FIGURE & KEY No.	PART No.	RANK	QTY	DESCRIPTION	REMARKS
17- 1	RB2-1699-000		1	ROLLER	
2	RB1-7203-000		1	ARM, PRESSURE	
3	RB2-1700-030		1	LEVER, REGISTRATION SENSOR	
4	RB1-7205-000		1	SPRING, TORSION	
5	RS5-2503-000		1	SPRING, COMPRESSION	
6	VS1-5057-006		1	CONNECTOR, 6P	
7	WG8-5362-000		2	IC, TLP1241 PHOTO INTERRUPTER	
8	RG9-1946-000		1	PICK-UP SENSOR CABLE 2	
9	RB1-7200-030		1	HOLDER	

FIGURE 18 DELIEVRY ASS'Y

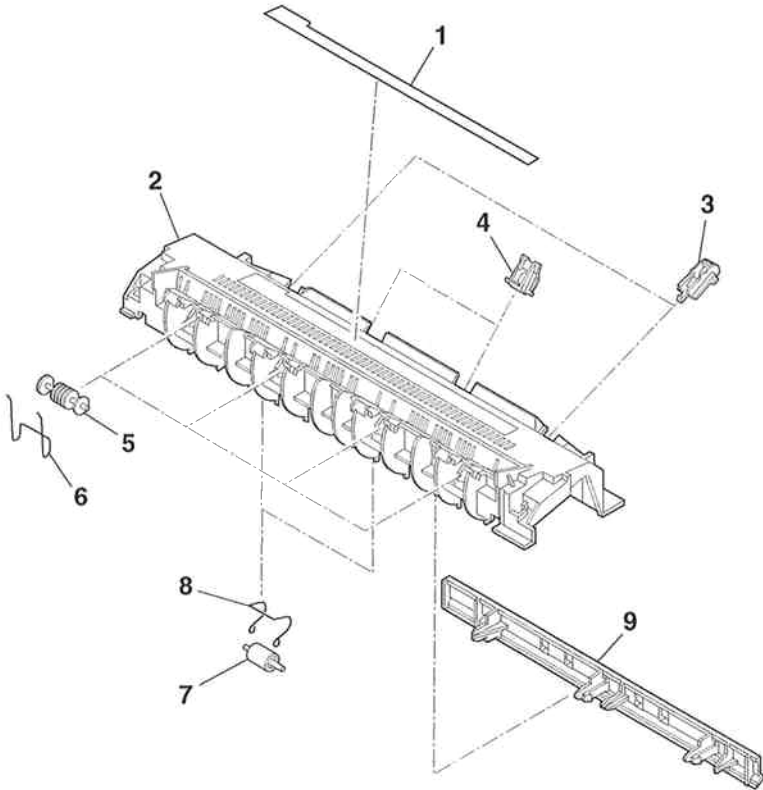


FIGURE 19 TRANSFER BLOCK ASS'Y

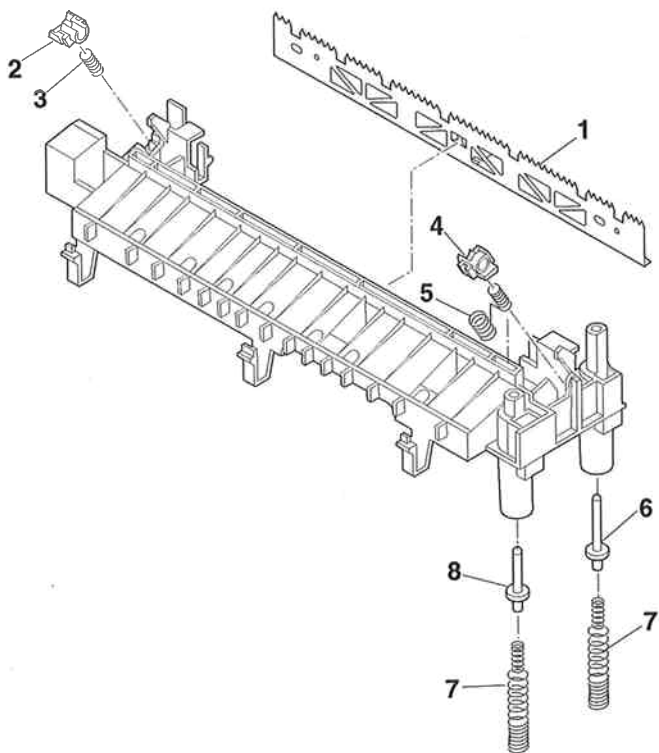


FIGURE 20 SEPARATION GUIDE ASS'Y (RECORDING)

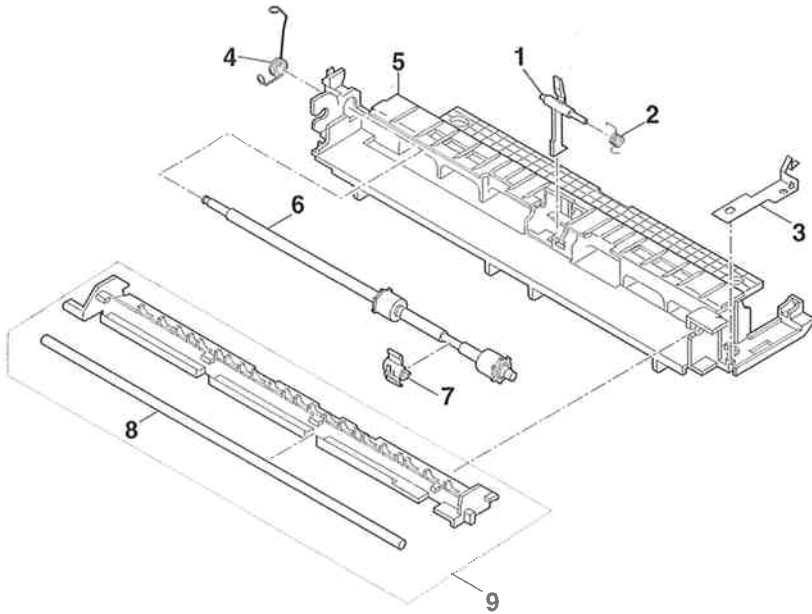
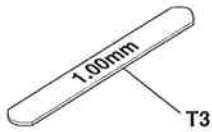
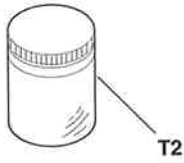
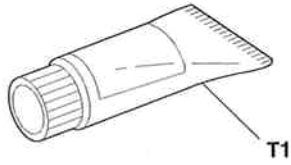


FIGURE & KEY No.	PART No.	R A N K	Q T Y	DESCRIPTION	REMARKS
20 - 1	RB1-7293-020		1	LEVER, SENSOR	
2	RB1-7294-000		1	SPRING, TORSION	
3	RB2-1691-000		1	SPRING, LEAF	
4	RB1-7277-000		1	SPRING, TORSION	
5	RB2-1687-000		1	GUIDE, SEPARATION	
6	RF5-2368-000		1	ROLLER, FACE UP	
7	RB2-1690-000		1	BUSHING	
8	RB2-1689-000		1	ROD, REINFORCEMENT	
9	RG5-3476-030		1	FLAPPER	

3. TOOL

FIGURE 21 TOOLS



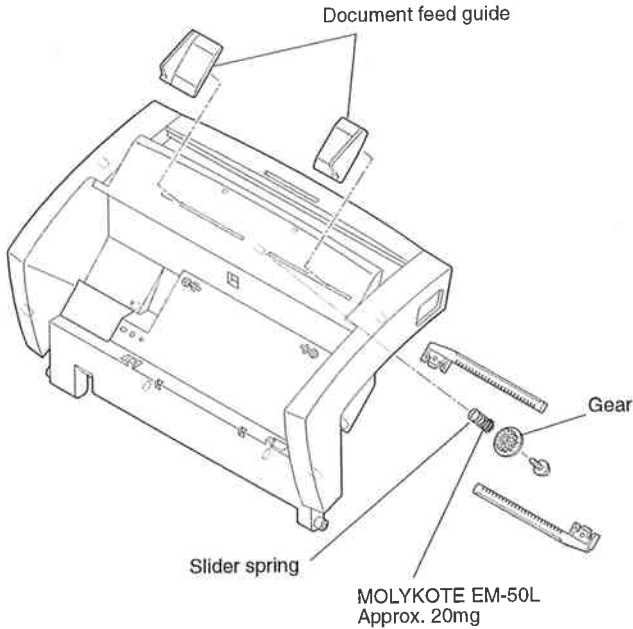
4. LUBRICATIONS

4.1 Locations

Some parts are lubricated with grease to ensure smooth operation and to increase conductivity. If lubricated parts are replaced or grease is removed, grease must be reapplied.

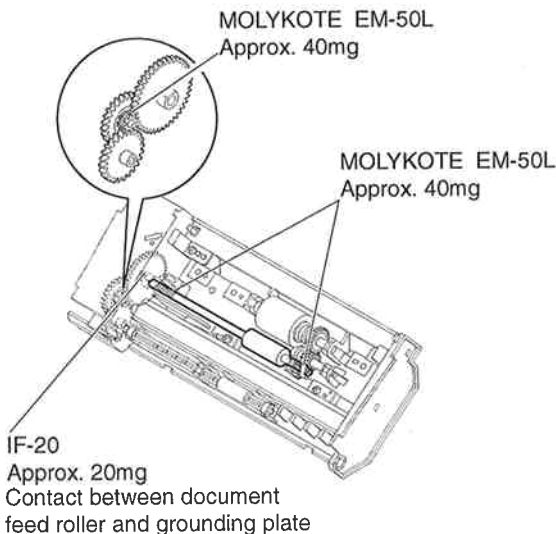
4.1.1 READING ASS'Y 2

Apply grease to the upper surface of the slider spring's top coil (the gear contact surface). Next, grasp the document feed guide, slide it back and forth a few times, then release it. Make sure that the document feed guide does not move more than 1mm after it is released.



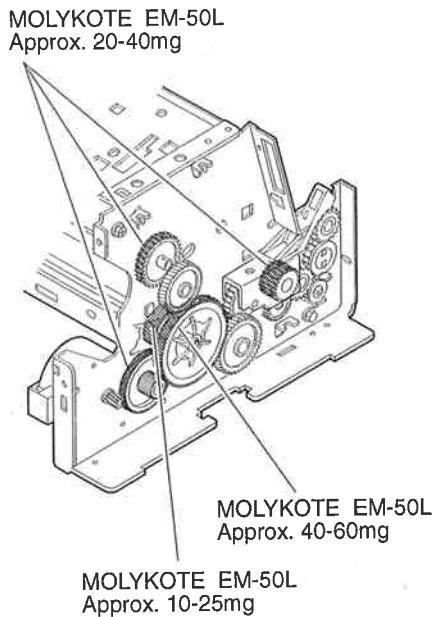
See FIGURE 7 for the assembly

4.1.2 DOCUMENT FEED ROLLER



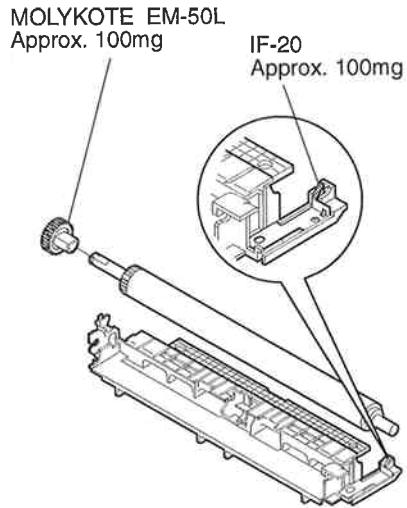
See FIGURE 9 for the assembly

4.1.3 DRIVE GEARS



See FIGURE 12 for the assembly

4.1.4 PRESSURE ROLLER & SEPARATION GUIDE ASS'Y

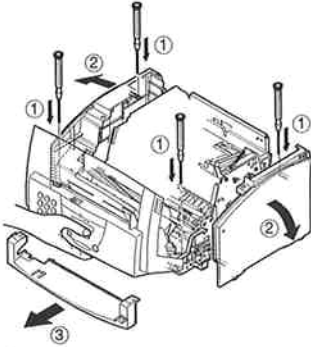


See FIGURE 13 for the assembly

5. GUIDE TO REPLACEMENT

FIGURE 2-a

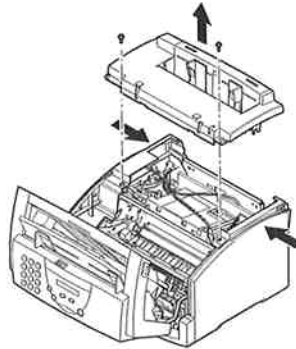
See Page 2-3



To remove the left and right side covers, use a fine screwdriver or your finger to unhook the retaining clips.

FIGURE 2-b

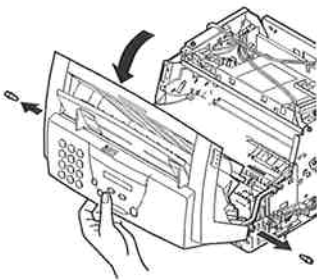
See Page 2-3



While pressing either the left or right side cover in the direction shown, lift off the upper cover.

FIGURE 3-a

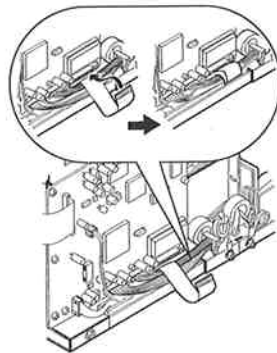
See Page 2-5



When removing the READING ASS'Y, use one hand to support, the READING ASS'Y while removing the TAPER PIN.

FIGURE 3-b

See Page 2-5



Use a FLAT CABLE to gather and contain the cables coming from the READ ASS'Y.

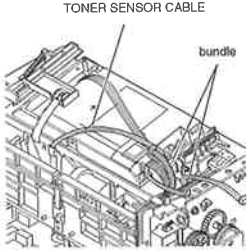
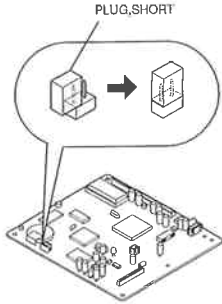
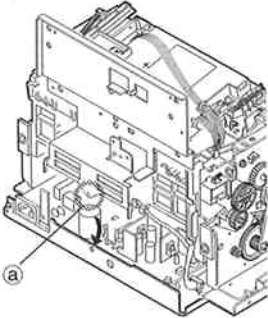
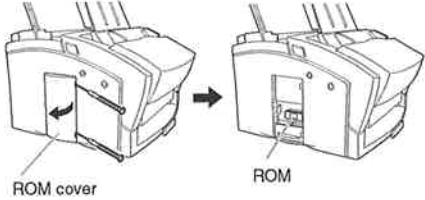
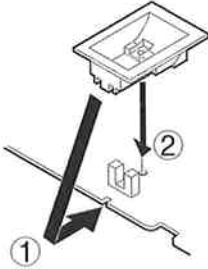
<p>FIGURE 4-a</p>	<p>See Page 2-7</p>	<p>FIGURE 4-b</p>	<p>See Page 2-7</p>
 <p>TONER SENSOR CABLE</p> <p>bundle</p> <p>Route the TONER SENSOR CABLE as shown in the figure to anchor the LASER CABLE and DOOR SENSOR CABLE.</p>		 <p>PLUG, SHORT</p> <p>The service part version of the SCNT board has a SHORT PLUG on one of the pins. When replacing the SCNT board, cover both pins with the plug. If both pins of the SCNT board service part are already by the plug, DO NOT INSTALL THE PART; the backup battery may be significantly depleted. When installing, be careful to avoid electrostatic damage to board components.</p>	
<p>FIGURE 4-c</p>	<p>See Page 2-7</p>	<p>FIGURE 4-d</p>	<p>See Page 2-7</p>
 <p>a</p> <p>When attaching the NCU holder, be sure portion @ is within the perimeter of the bottom plate.</p>		 <p>ROM cover</p> <p>ROM</p> <p>Open the ROM cover with a precision driver, taking care not to scratch the outer surface. After opening the ROM cover, the ROM unit will be seen. Exchange the ROM using the ROM remover tool.</p>	

FIGURE 5-a

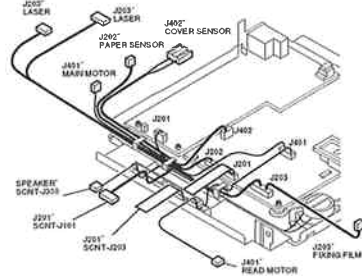
See Page 2-9



To attach the WATER PROOF COVER to the PCNT board, slide it into position (1) and press down to secure (2).

FIGURE 5-b

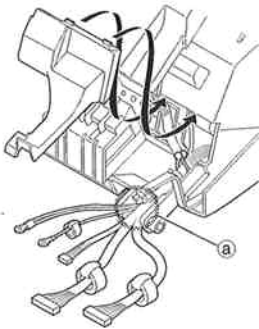
See Page 2-9



Route the cables on the PCNT and PSU boards as shown in the figure.

FIGURE 6-a

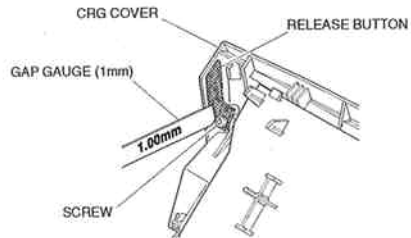
See Page 2-11



Attach the CABLE COVER by hooking the projections into the slots as shown by the arrows. Be careful not to pinch the cables (a).

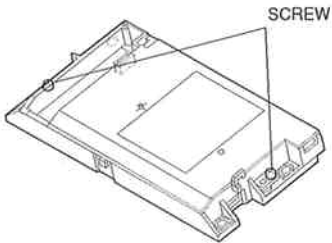
FIGURE 6-b

See Page 2-11



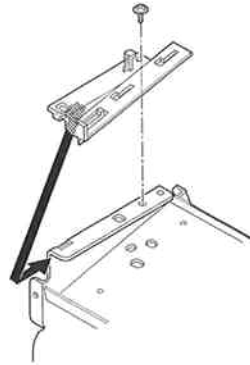
When attaching the release button to the cartridge cover, tighten the screw with the gap gauge (1mm) inserted into the gap between the cartridge cover and release button. Then check that the cartridge cover opens and closes normally.

FIGURE 10-a

See Page
2-19

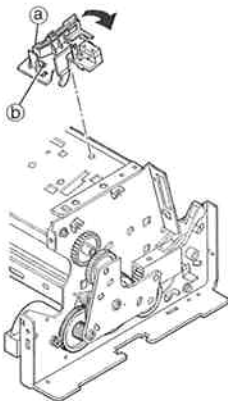
Do not loosen or remove the two black screws on the SCANNER ASS'Y.

FIGURE 10-b

See Page
2-19

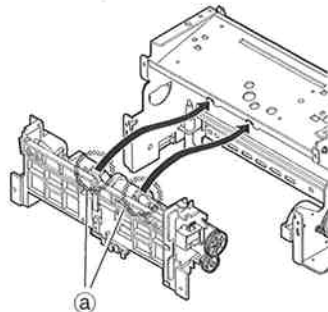
Attach the ACTUATOR BASE retaining clip to the frame as shown by the arrow.

FIGURE 10-c

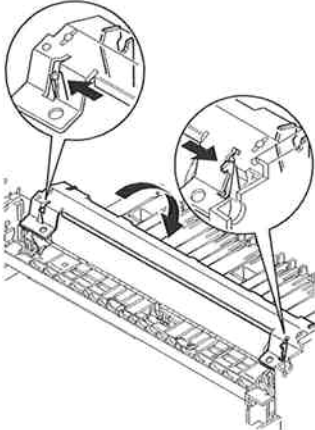
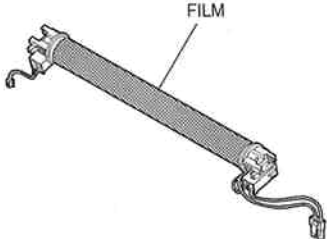
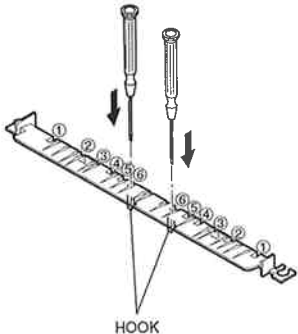
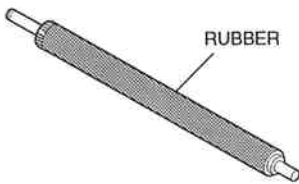
See Page
2-19

To attach the SWITCH LEVER ASS'Y: with portion (a) lifted up, and while continuing to press upward on pin (b), rotate the ass'y in the arrow's direction.

FIGURE 10-d

See Page
2-19

After attaching the PAPER FEED UNIT to the frame, hook portions (a) into the slots as shown by the arrows.

<p>FIGURE 11-a</p>	<p>See Page 2-21</p>	<p>FIGURE 11-b</p>	<p>See Page 2-21</p>
 <p>When removing the PRESSURE PLATE, use a fine screwdriver to press the clips outward and unhook them.</p>	 <p>FILM</p> <p>Be careful not to touch the film on the FIXING ASS'Y with your hands.</p>		
<p>FIGURE 11-c</p>	<p>See Page 2-21</p>	<p>FIGURE 11-d</p>	<p>See Page 2-21</p>
 <p>HOOK</p> <p>Insert a fine screwdriver into the sixth holes from both left and right ends to unhook the retaining clips.</p>	 <p>RUBBER</p> <p>Do not touch the rubber portion of the PRESSURE ROLLER with your hands.</p>		

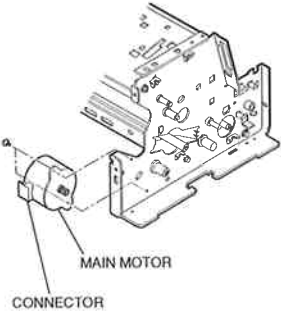
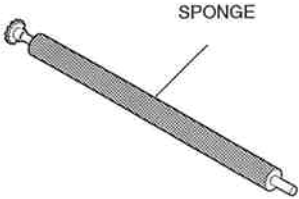
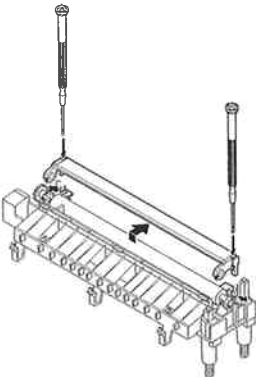
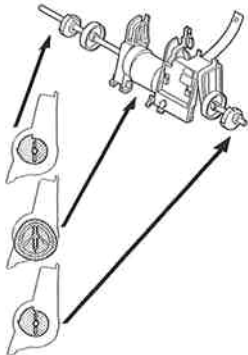
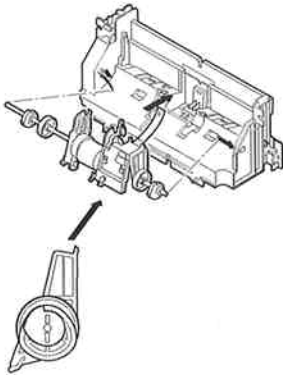
<p>FIGURE 12-a</p>	<p>See Page 2-23</p>	<p>FIGURE 13-a</p>	<p>See Page 2-25</p>
 <p>CONNECTOR</p> <p>MAIN MOTOR</p> <p>When attaching the MAIN MOTOR, position it as shown in the figure.</p>		 <p>SPONGE</p> <p>Do not touch the sponge portion of the TRANSFER ROLLER with your hands.</p>	
<p>FIGURE 13-b</p>	<p>See Page 2-25</p>	<p>FIGURE 14-a</p>	<p>See Page 2-27</p>
 <p>When removing the TRANSFER GUIDE, use a fine screwdriver to unhook the retaining clips.</p>		 <p>When assembling the PICKUP ROLLER ASS'Y, be careful that the cams and roller are correctly aligned.</p>	

FIGURE 14-b

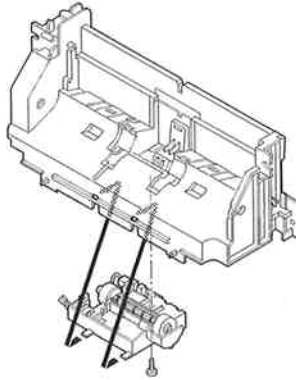
See Page
2-27



When attaching the PICKUP ROLLER ASS'Y, be sure it is faced in the direction shown in the figure.

FIGURE 14-c

See Page
2-27



Slide the projections on the FEEDER ASS'Y into the slots on the PAPER FEED FRAME.

This page intentionally left blank

6. NUMERICAL INDEX

PART NUMBER	FIGURE & KEY NO.	DESCRIPTION	PART NUMBER	FIGURE & KEY NO.	DESCRIPTION
CK-8008-000	21 - T2	ELECTRICITY GREASE (IF-20)	HB1-3018-000	10 - 4	STOPPER, TAPE
HB1-1230-000	1 - 6	PAPER OUT PUT EXTENSION	HB1-3019-000	13 - 7	STOPPER, CARTRIDGE
HB1-1264-000	1 - 12	HOLDER, HANDSET CRADLE	HB1-3020-030	5 - 14	PLATE, BOTTOM
HB1-1779-000	9 - 2	SPACER	HB1-3021-000	5 - 17	GUIDE, CABLE
HB1-1784-000	8 - 17	BRUSH, STATIC DISCHARGE	HB1-3022-000	4 - 13	SPACER
HB1-1870-000	6 - 10	SHEET		5 - 18	
HB1-2860-030	8 - 22	COVER, ADF, UPPER	HB1-3023-000	5 - 16	HOLDER, SPEAKER
HB1-2861-000	8 - 9	ARM, DETECTION (DES)	HB1-3024-040	5 - 22	FOOT, LEFT
HB1-2862-000	8 - 11	ARM, DETECTION (DS)	HB1-3025-040	5 - 23	FOOT, RIGHT
HB1-2863-000	8 - 14	STOPPER, DOCUMENT	HB1-3026-050	5 - 20	RAIL, OUTPUT TRAY
HB1-2864-000	8 - 6	ROLLER, BACK UP	HB1-3027-030	4 - 4	HOLDER, SCNT BOARD
HB1-2865-000	8 - 8	SHAFT, BACK UP ROLLER	HB1-3028-000	4 - 11	SHEET, CORE GARD
HB1-2866-000	8 - 10	PLATE, PRESSURE	HB1-3031-000	9 - 18	FRAME,ADF LOWER
HB1-2871-030	16 - 3	PLATE, PRESSURE	HB1-3032-000	7 - 1	COVER, DOCUMENT GUIDE, LOWER
HB1-2873-030	16 - 2	HOLDER, SEPARATION GUIDE	HB1-3033-000	9 - 12	ROLLER, DOCUMENT FEED
HB1-2875-000	8 - 21	SHEET, DOCUMENT STOP	HB1-3034-000	9 - 1	ROLLER, SEPARATION
HB1-2881-000	9 - 5	SHAFT, SEPARATION ROLLER	HB1-3035-000	16 - 4	PAD, SEPARATION
HB1-2883-000	7 - 7	SLIDER, RACK	HB1-3036-000	9 - 22	PLATE, GROUNDING
HB1-2895-000	16 - 5	HOLDER, SEPARATION	HB1-3037-000	9 - 9	PLATE, CONTACT SENSOR
HB1-2980-000	2 - 1	COVER, UPPER	HB1-3038-000	9 - 23	PLATE, DOCUMENT FEED MOTOR
HB1-2982-040	2 - 17	COVER, RIGHT	HB1-3041-000	8 - 15	LEVER, DOCUMENT RELEASE
HB1-2983-040	2 - 15	COVER, REAR	HB1-3042-000	4 - 2	COVER, FIXING SECTION, LEFT
HB1-2984-030	2 - 18	COVER, FRONT	HB1-3043-000	4 - 1	COVER, FIXING SECTION, RIGHT
HB1-2985-000	4 - 3	LEVER, SWITCHING	HB1-3044-000	6 - 14	SHEET, PAPER EJECT (L)
HB1-2987-000	1 - 5	TRAY, PAPER OUTPUT	HB1-3045-000	6 - 15	SHEET, PAPER EJECT (R)
HB1-2988-050	1 - 2	TRAY, SUPPORT	HB1-3049-000	2 - 13	SUPPORT, STOPPER
HB1-2989-000	1 - 1	TRAY, PAPER REST	HB1-3105-000	6 - 4	COVER, CABLE
HB1-2990-000	4 - 5	HOLDER, NCU BOARD	HB1-3107-030	2 - 11	COVER, LEFT
HB1-2991-000	3 - 1	PIN, TAPER	HB1-3109-020	6 - 8	STOPPER, CRG
HB1-2992-000	2 - 12	COVER, ROM	HB1-3210-000	1 - 7	LABEL, CAUTION
HB1-2995-080	7 - 4	COVER, CARTRIDGE	HB1-3211-000	2 - 5	SHEET, TRAY
HB1-2996-000	6 - 2	AIR DUCT	HB1-3212-000	5 - 21	FOOT, RUBBER
HB1-2997-000	6 - 3	GUIDE, FACE DOWN	HB1-3257-000	8 - 20	STOPPER, OPERATION PANEL
HB1-2998-030	7 - 5	GUIDE, DOCUMENT FEED, LEFT	HB1-3418-000	10 - 8	SPRING, GROUNDING
HB1-2999-030	7 - 6	GUIDE, DOCUMENT FEED, RIGHT	HB1-3427-000	8 - 2	SHEET, ONE-TOUCH DIAL
HB1-3000-050	6 - 7	RELEASE BUTTON, LEFT	HF5-0328-000	9 - 15	ROLLER, DOCUMENT EJECT
HB1-3001-000	6 - 1	AIR DUCT	HF5-0362-030	8 - 18	WHITE SHEET UNIT
HB1-3002-000	2 - 4	TRAY, AUTO PAPER FEED	HF5-0375-000	9 - 11	LOCK, OPERATION PANEL
HB1-3003-000	2 - 2	GUIDE, AUTO PAPER FEED, LEFT	HG1-4268-040	4 - 7	NCU BOARD ASSY
HB1-3004-000	2 - 3	GUIDE, AUTO PAPER FEED, RIGHT	HG5-1288-000	14 - 26	PICKUP ROLLER ASSY
HB1-3005-000	2 - 20	PLATE, MANUAL PAPER FEED	HG5-1292-020	2 - 10	AUTO PAPER FEED ASSY
HB1-3006-000	2 - 19	GUIDE, MANUAL PAPER FEED, LEFT	HG5-1293-020	2 - 21	MANUAL PAPER FEED ASSY
HB1-3007-000	2 - 14	GUIDE, MANUAL PAPER FEED, RIGHT	HG5-1304-000	5 - 6	PONT BOARD ASSY
HB1-3008-000	2 - 6	RACK	HG5-1306-000	4 - 8	MODULAR BOARD ASSY
HB1-3009-050	6 - 6	RELEASE BUTTON, RIGHT	HG5-1308-000	8 - 3	SEPARATION GUIDE ASSY
HB1-3010-030	6 - 5	SUPPORT, TRAY	HG5-1643-000	4 - 6	SCNT BOARD ASSY
HB1-3011-000	15 - 10	HOLDER, TONER SENSOR	HH2-2757-000	4 - 9	FLAT CABLE
HB1-3012-000	15 - 12	SUPPORTER, TONER SENSOR	HH2-2758-000	5 - 10	FLAT CABLE
HB1-3013-000	15 - 9	HOLDER, ROLLER	HH2-2759-000	5 - 11	CABLE ASSEMBLY
HB1-3014-000	15 - 14	SUB HOLDER, ROLLER	HH2-2760-000	5 - 9	CABLE WITH CONNECTOR, 6P
HB1-3015-000	15 - 13	BELT, TONER SENSOR	HH2-2761-000	5 - 7	CABLE ASSEMBLY
HB1-3016-000	10 - 1	BASE, ACTUATOR	HH2-2762-000	5 - 5	CABLE ASSEMBLY
HB1-3017-030	10 - 5	ACTUATOR, TONER SENSOR	HH2-2763-000	9 - 6	CABLE WITH CONNECTOR, 10P

PART NUMBER	FIGURE & KEY NO.	DESCRIPTION	PART NUMBER	FIGURE & KEY NO.	DESCRIPTION
HH2-2765-000	9 - 9	WIRE, GROUNDING	RB1-7200-030	17 - 9	HOLDER
HH2-2766-000	8 - 12	WIRE, GROUNDING	RB1-7203-000	17 - 2	ARM, PRESSURE
HH2-2767-000	4 - 10	WIRE, GROUNDING	RB1-7205-000	17 - 4	SPRING, TORSION
HH2-2768-000	5 - 8	CABLE WITH CONNECTOR, 2P	RB1-7206-000	14 - 10	HOLDER, ARM
HH2-2824-000	1 - 4	MODULAR CORD, 2P	RB1-7219-000	14 - 15	STOPPER
HH3-5313-000	5 - 2	POWER SUPPLY UNIT	RB1-7220-000	14 - 16	HOLDER, STOPPER
HH4-3197-000	4 - 17	IC, LH538N33, MASK-ROM	RB1-7221-000	14 - 19	SHAFT, DRIVE
HH4-3199-000	1 - 8	CD-ROM, DRIVER SOFTWARE	RB1-7222-000	14 - 20	BUSHING
HH7-2104-000	1 - 11	HANDSET ASS'Y (USA, AG)	RB1-7223-000	10 - 12	SPRING, GROUNDING
HH7-2285-000	9 - 7	CONTACT SENSOR UNIT	RB1-7224-000	14 - 22	RATCHET
HH7-2287-000	5 - 15	SPEAKER UNIT	RB1-7236-000	19 - 8	PIN, CONTACT
HH7-2290-000	9 - 20	MOTOR, DOCUMENT FEED	RB1-7237-000	19 - 6	PIN, CONTACT
HH7-2291-000	15 - 11	TONER SENSOR ASS'Y	RB1-7238-000	13 - 17	SPRING, LEAF
HH7-2357-000	8 - 1	OPERATION PANEL ASS'Y	RB1-7246-000	13 - 15	BUSHING
HS5-0152-020	9 - 4	GEAR, Z40B	RB1-7247-000	11 - 4	GUIDE, PAPER
HS5-0155-000	9 - 14	GEAR, Z21D	RB1-7255-000	13 - 12	SIDE PLATE, LEFT
HS5-0238-000	7 - 9	GEAR, Z16	RB1-7256-000	13 - 13	SIDE PLATE, RIGHT
HS5-0250-030	9 - 25	GEAR, Z82D	RB1-7257-000	11 - 15	BUSHING, SPRING
HS5-0251-030	9 - 26	GEAR, Z59D	RB1-7258-000	11 - 7	PLATE, PRESSURE
HS5-0252-030	9 - 24	GEAR, Z21Z54	RB1-7270-000	5 - 12	CUSHION
HS5-0253-030	9 - 13	GEAR, Z21Z88B	RB1-7277-000	20 - 4	SPRING, TORSION
HS5-0254-000	2 - 8	GEAR, Z16	RB1-7284-020	18 - 5	ROLLER, FACE DOWN
HS5-1069-030	9 - 17	BUSHING	RB1-7286-000	18 - 6	SPRING, WIRE
HS5-1070-030	9 - 16	BUSHING	RB1-7287-000	18 - 8	SPRING, WIRE
HS5-2077-000	9 - 3	SPRING, CLUTCH	RB1-7288-020	11 - 12	BUSHING
HS5-2078-000	8 - 4	SPRING	RB1-7293-020	20 - 1	LEVER, SENSOR
HS5-2079-000	16 - 1	SPRING, SEPARATION GUIDE	RB1-7294-000	20 - 2	SPRING, TORSION
HS5-2129-000	8 - 19	SPRING, WHITE SHEET	RB1-7334-000	18 - 9	GUIDE, JAMMED PAPER REMOVAL
HS5-2130-000	7 - 8	SPRING, SLIDER	RB1-7341-020	11 - 11	GUIDE, SUB, CARTRIDGE, RIGHT
HS5-2139-000	15 - 15	SPRING, TONER SENSOR	RB1-8170-000	12 - 1	LEVER, RELEASE, D
HS5-2140-000	10 - 3	SPRING, ACTUATOR	RB2-1632-000	12 - 12	PLATE, GEAR SUPPORT
HS5-2141-020	2 - 7	SPRING, SLIDER	RB2-1633-000	15 - 7	ROLLER, SUB
HS5-6023-030	8 - 7	ROLLER, BACK UP	RB2-1634-000	15 - 8	ROLLER, PAPER PICK-UP
HS5-6042-000	8 - 13	ROLLER, DELIVERY, 2	RB2-1655-000	19 - 2	BUSHING
HT1-2120-000	1 - 9	USER'S GUIDE, CFX-L3500IF	RB2-1656-000	19 - 4	BUSHING
HT1-2123-000	1 - 10	USER'S GUIDE DESKTOP MANAGER	RB2-1657-000	19 - 1	ELIMINATOR, STATIC CHARGE
HY9-0002-000	21 - T3	GAUGE, GAP (1MM)	RB2-1668-000	11 - 2	RUBBER, CONTINUITY
HY9-0007-000	21 - T1	LUBE, MOLYKOTE EM-50L	RB2-1685-000	18 - 7	ROLLER, FACE UP
RB1-7107-000	13 - 8	HOLDER, GEAR	RB2-1686-000	18 - 2	FRAME
RB1-7129-000	13 - 19	SPRING, GROUNDING	RB2-1687-000	20 - 5	GUIDE, SEPARATION
RB1-7130-020	13 - 11	GUIDE, CABLE	RB2-1689-000	20 - 8	ROD, REINFORCEMENT
RB1-7172-000	14 - 14	SPRING, GROUNDING	RB2-1690-000	20 - 7	BUSHING
RB1-7177-000	14 - 28	FRAME, PAPER FEED	RB2-1691-000	20 - 3	SPRING, LEAF
RB1-7181-000	14 - 6	ARM, SEPARATION	RB2-1699-000	17 - 1	ROLLER
RB1-7182-000	14 - 12	LEVER, SENSOR	RB2-1700-030	17 - 3	LEVER, REGISTRATION SENSOR
RB1-7183-000	14 - 13	HOLDER, LEVER	RB2-1701-000	15 - 5	ROLLER, FEED
RB1-7184-000	14 - 27	BUSHING	RB2-1703-000	15 - 3	ROLLER, SUB
RB1-7185-000	14 - 3	ARM, PLATE, LEFT	RB2-1706-000	14 - 1	SHEET, SEPARATION
RB1-7186-000	14 - 4	ARM, PLATE, RIGHT	RB2-1707-000	15 - 17	SHAFT, PAPER PICK-UP
RB1-7193-000	15 - 1	CAM, LEFT	RF5-1492-000	14 - 8	PAD, LEFT
RB1-7194-000	15 - 16	CAM, RIGHT	RF5-1493-000	14 - 9	PAD, RIGHT
RB1-7197-020	14 - 25	CLUTCH	RF5-1513-000	12 - 2	ARM, SWING
RB1-7199-000	14 - 11	SPRING, GROUNDING	RF5-1514-020	13 - 2	GUIDE, CARTRIDGE, LEFT

CFX-L3500IF 6.NUMERICAL INDEX

PART NUMBER	FIGURE & KEY NO.	DESCRIPTION
RF5-1515-020	13 - 6	GUIDE, CARTRIDGE
RF5-1533-000	13 - 18	PLATE, COMMUNITY
RF5-1534-000	13 - 4	ROLLER, TRANSFER
RF5-2358-000	13 - 5	GUIDE, TRANSFER
RF5-2364-000	11 - 3	ROLLER, PRESSURE
RF5-2367-000	11 - 14	ROLLER, FEEDER
RF5-2368-000	20 - 6	ROLLER, FACE UP
RF5-2372-000	14 - 2	PLATE, MIDDLE
RF5-2382-000	5 - 13	COVER, WATERPROOF
RG5-1947-000	14 - 24	FEEDER DRIVE ASSY
RG5-3452-000	13 - 3	TRANSFER BLOCK ASSY
RG5-3453-000	10 - 10	SWITCH LEVER ASSY
RG5-3459-040	11 - 5	FIXING ASSY
RG5-3474-020	11 - 9	DELIVERY ASSY
RG5-3475-040	13 - 9	SEPARATION GUIDE ASSY
RG5-3476-030	20 - 9	FLAPPER
RG5-3478-000	18 - 4	SPUR ASSY
RG5-3479-000	18 - 3	SPUR ASSY
RG5-3485-030	14 - 29	FEEDER ASSY
RG5-3492-000	15 - 6	FEED ROLLER ASSY, LEFT
RG9-1281-000	10 - 6	SCANNER ASSY
RG9-1948-000	17 - 8	PICK-UP SENSOR CABLE 2
RH7-1320-000	12 - 14	MOTOR, DC 12V 24W
RH7-5139-030	14 - 17	SOLENOID
RS5-0786-000	14 - 23	GEAR, 24T
RS5-0788-000	12 - 7	GEAR, 32T/93T
RS5-0789-000	12 - 4	GEAR, 37T
RS5-0790-000	12 - 8	GEAR, 54T/19T
RS5-0791-000	12 - 3	GEAR, 36T
RS5-0793-000	12 - 9	GEAR, 22T
RS5-0794-000	12 - 10	GEAR, 24T
RS5-0796-000	11 - 1	GEAR, 27T
RS5-0797-000	11 - 13	GEAR, 18T
RS5-0798-000	12 - 11	GEAR, 15T
RS5-0799-000	12 - 5	GEAR, 51T/17T
RS5-2501-000	14 - 5	SPRING, COMPRESSION
RS5-2502-000	14 - 7	SPRING, COMPRESSION
RS5-2503-000	17 - 5	SPRING, COMPRESSION
RS5-2504-000	19 - 3	SPRING, COMPRESSION
RS5-2505-000	19 - 5	SPRING, COMPRESSION
RS5-2506-000	13 - 1	SPRING, TORSION
RS5-2508-000	11 - 6	SPRING, COMPRESSION
RS5-2510-000	14 - 21	SPRING, COMPRESSION
RS5-2512-000	19 - 7	SPRING, COMPRESSION
RS5-8543-020	18 - 1	LABEL, "WARNING HIGH TEMP"
RS6-0380-000	12 - 6	GEAR, 23T/8T
VS1-6057-002	13 - 16	CONNECTOR, 2P
VS1-6057-004	3 - 2	CONNECTOR, 4P
VS1-6057-006	17 - 6	CONNECTOR, 6P
WG8-5362-000	17 - 7	IC, TLP1241 PHOTO INTERRUPTER
WT2-0317-000	4 - 12	CLIP, CABLE
	5 - 19	
WT2-5465-000	1 - 13	RIVET

PART NUMBER	FIGURE & KEY NO.	DESCRIPTION
WT2-5569-000	6 - 9	CLIP, CABLE
WT3-5068-000	1 - 3	CORD, POWER SUPPLY, 120V
XA9-0267-000	12 - 13	SCREW, TP, M3X6
XA9-0476-000	2 - 9	SCREW, TP M3X8
	7 - 10	
	8 - 16	
XA9-0666-000	13 - 14	SCREW, M3x6
XA9-0724-000	3 - 3	SCREW, M3X8
	4 - 16	
	5 - 24	
	10 - 2	
	11 - 10	
	13 - 10	
XA9-0863-000	5 - 4	SCREW, TAP M3X6
XA9-0879-000	2 - 22	SCREW, RS M3X10
XB1-2300-407	9 - 21	SCREW, BH3X4 (S)
XB1-2300-807	4 - 15	SCREW, CROSS-RECESS, FCH
XB2-7300-607	5 - 3	SCREW, M3X6
XB4-7260-607	9 - 10	SCREW, TAP TIGHT, BINDING HEAD
XB4-7300-607	5 - 25	SCREW, TAP TIGHT, BINDING HEAD
XB4-7300-807	8 - 23	SCREW, TAP TIGHT, BINDING HEAD
	9 - 8	
XB4-7300-809	6 - 12	SCREW, TAP, BINDING HEAD, M3X8
	10 - 9	
XB4-7301-007	6 - 11	SCREW, TAP TIGHT BH3X10
	7 - 2	
	8 - 5	
	9 - 27	
XB4-7301-409	6 - 13	SCREW, TAPPING M3X14
XB4-7401-007	4 - 14	SCREW, PAN HEAD SELF-TAPPING
	14 - 18	
XB6-7300-807	2 - 16	SCREW, TP, M3X8
	10 - 7	
	11 - 8	
XD9-0131-000	15 - 4	RINGE
XD9-0159-000	15 - 2	PIN, DOWEL



Printed on paper that
contains 100% reused paper.

Canon